

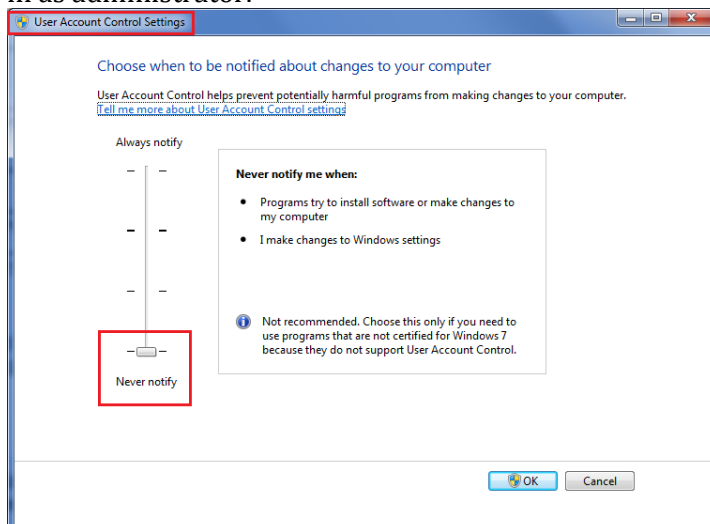
## Contents

Minimum System Requirements .....	<b>Error! Bookmark not defined.</b>
UniLogic Installation .....	3
Firmware Update and Management.....	3
Firmware Management .....	3
Windows USB Driver Installation.....	5
Windows XP.....	5
Windows 8/10.....	7
Disabling Driver Signature Enforcement.....	7
Manually Installing Driver, Windows 8/10 .....	9
Known Issues .....	11

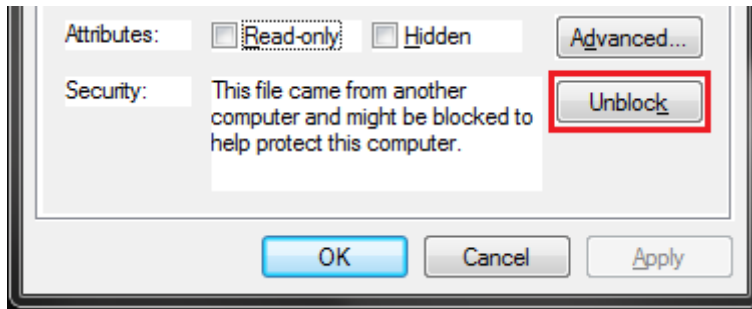
For compatible and stable systems please follow the system requirements in the table below.

Processor	Intel® Pentium 4 AMD® Athlon 2.4GHz or faster processor
Operating system	32/64 - bit operating systems Microsoft Windows XP Service Pack 3 Windows 7 Windows 8 Windows 10
RAM	1GB for U90Ladder and VisiLogic • 2GB for UniLogic (4G recommended)
Hard disk Storage Space	300MB for U90 Ladder and VisiLogic • 1GB for UniLogic
Screen resolution	1024x768, 24-bit colors and small font settings

Recommended to turn OFF windows UAC (User Account Control) >Then Reboot your PC > Log-in as administrator.

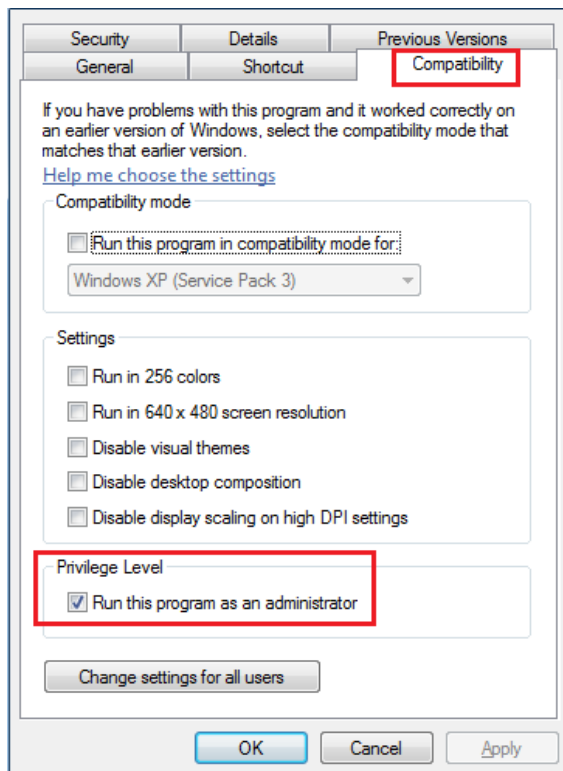


Save the setup file on your desktop and make sure that the installation file is not blocked (Right click on the file>Properties) If yes, just click on the unblock button:



Install the software.

Go to the properties of the software' shortcut and under compatibility ticked verify the Privilege Level "Run this program as an administrator".



---

**Notes** Windows XP: the UniLogic™ installation will also include SQL 2008 R2 Express.

The UniLogic™ installation files for higher versions of Windows do not require SQL 2008 R2 Express.

---

## UniLogic Installation

1. Download the UniLogic setup file.
2. Run the setup and follow the onscreen directions.

## Firmware Update and Management

When you download a project, UniLogic checks to see if the firmware in the controller is compatible with the UniLogic version. If not, UniLogic displays the following message, which includes directions for updating the firmware.



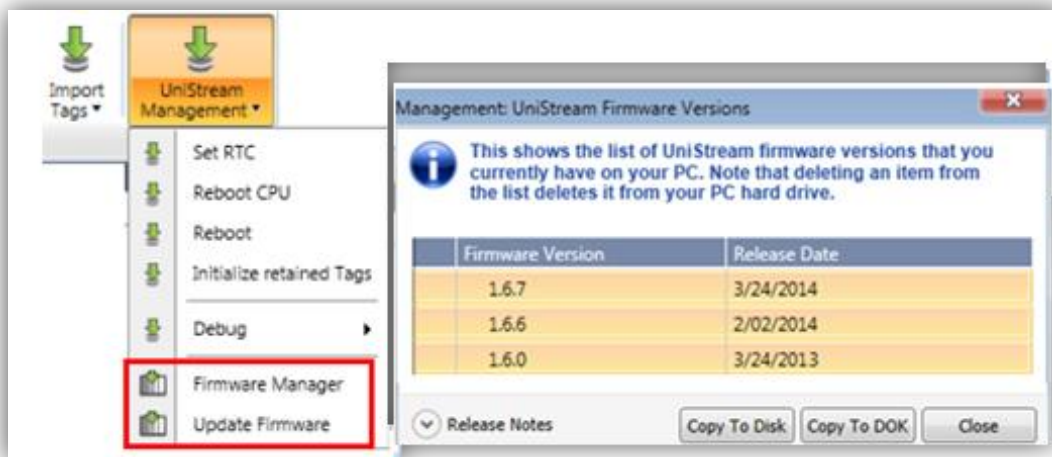
In some cases, the download might proceed, but when it is complete, the controller panel displays a message with instructions: HMI Version Mismatch message.

### Firmware Management

The PLC tab on the program ribbon offers Firmware Management tools.

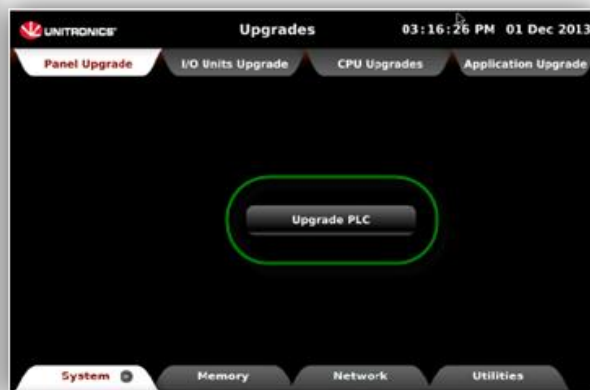
Click Firmware Manager to locate all firmware files on your PC. You can then select the desired firmware and copy it onto a USB stick (DOK) and install it in the controller.

If you have an Internet connection, you can click Update Firmware to connect to the Unitronics website and download any new firmware releases.

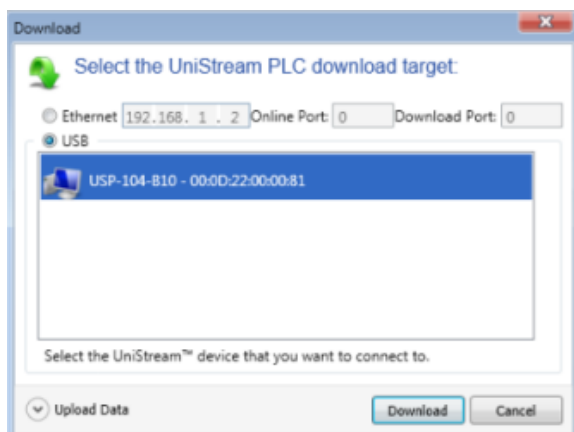


To install firmware via UniApps:

1. Plug a USB stick containing the firmware into the panel's USB port.
2. Open UniApps by pressing the upper right corner of the panel for several seconds.
3. From the System tab, Select Upgrades.
4. Under Panel Upgrade, press Upgrade PLC.



5. Wait for the system to complete the process.



# **Windows USB Driver Installation**

Depending on your version of Windows, you may need to install the USB drivers manually in order to establish UniStream - PC communications.

Note that you can simply choose to connect to UniStream via Ethernet for application download, Online Test mode, etc, thereby skipping the need to install USB drivers.

Under Windows 7, the USB driver installs automatically without issues.

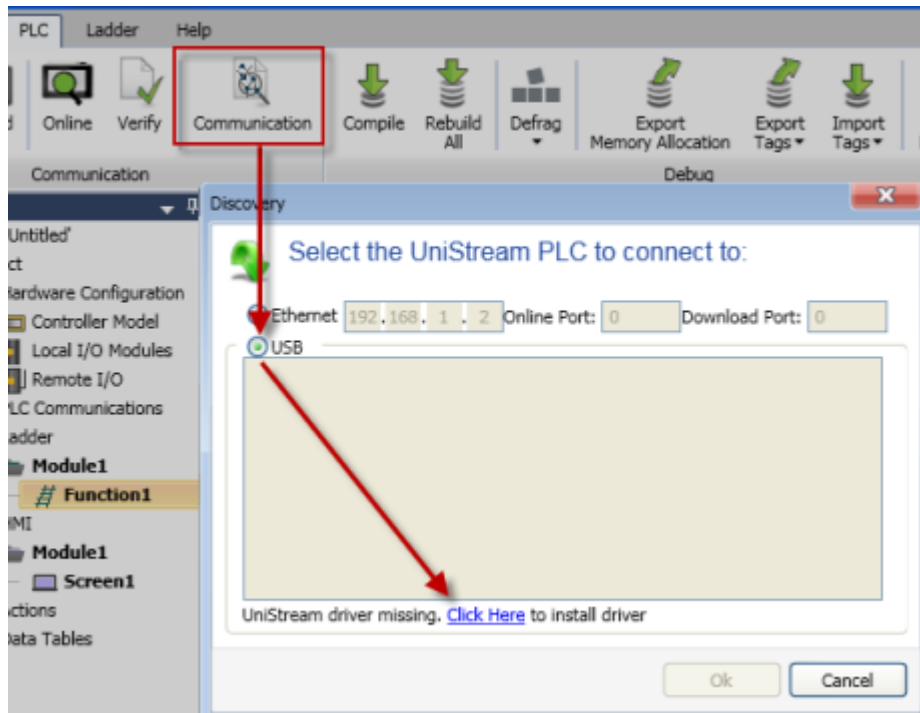
## **Windows XP**

To install the driver manually, follow the directions below:

1. Connect the UniStream device to the PC using the USB cable.
2. The Found New Hardware Wizard opens; click Cancel.



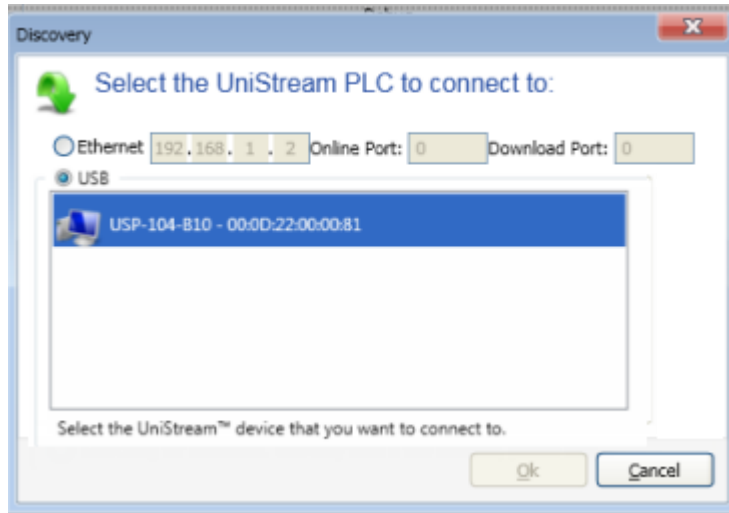
3. On the UniLogic ribbon, select PLC and then click Communication.
4. The Discovery window opens, ensure that USB is selected.  
If the USB driver is not installed, this information appears in the window; click on the hyperlink "Click Here" as shown in the following figure.



5. During the driver installation process, Windows may raise questions about testing and compatibility. Select Continue Anyway.



6. When the driver installation is complete, Discovery will begin searching for Hardware. When Discovery finds the connected UniStream device, it will appear in the list; and may be selected as the Communication Target.



## Windows 8/10

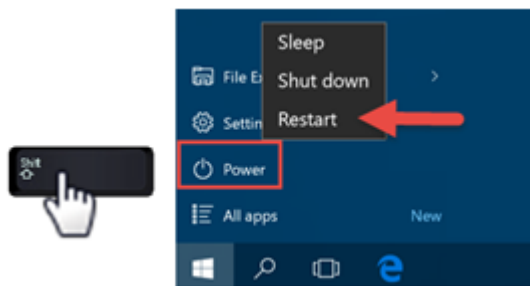
The PC to UniStream USB connection is via Ethernet. However, Windows 8 and 10 identify it (incorrectly) as a serial connection.

This is why you must install the driver manually according to the following instructions:

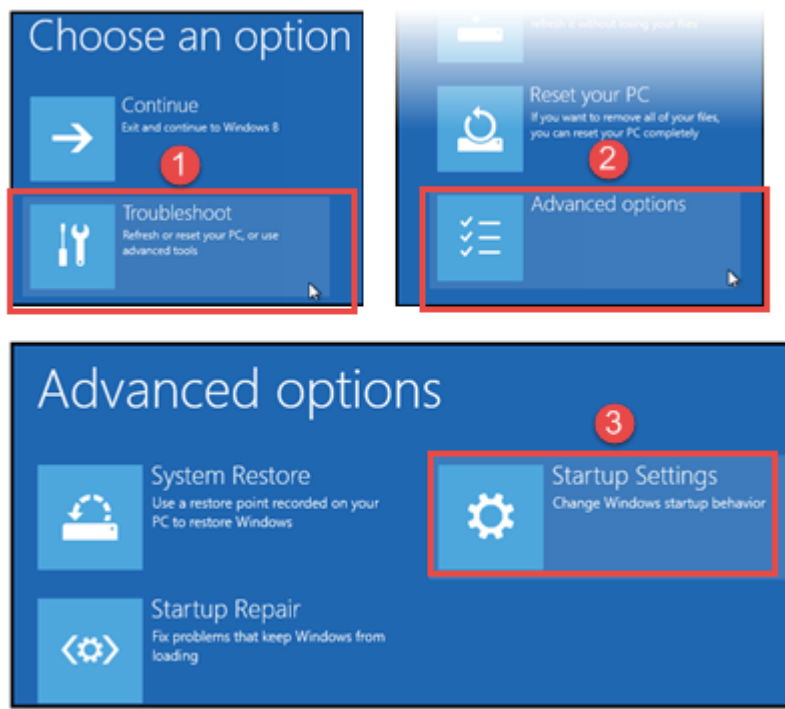
In addition, note that the UniStream USB driver is not digitally signed. This means that you must disable driver signature enforcement **before** you can install the driver.

### Disabling Driver Signature Enforcement

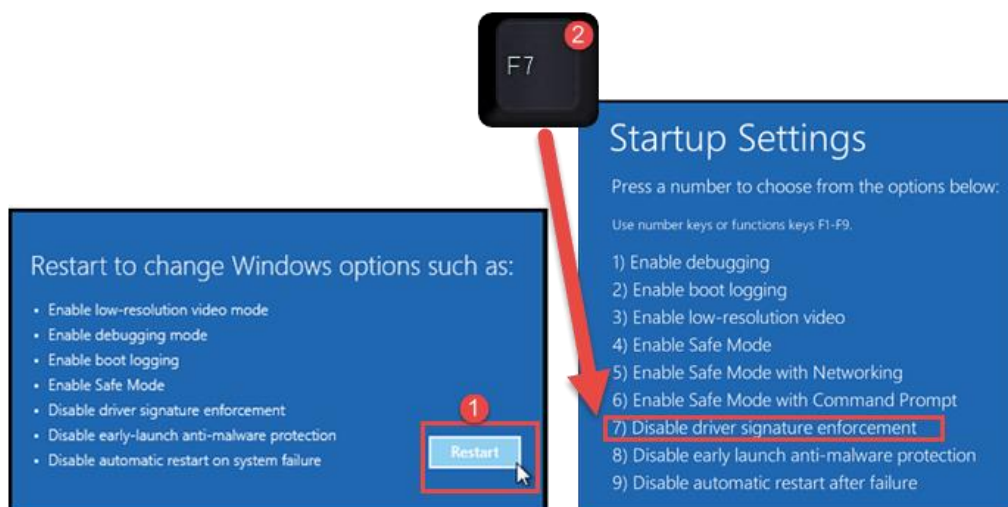
1. Hold down the Shift key while selecting Restart.  
Restart is located under Power options menu (Windows 8: located under Charms or on the login screen) (Windows 10: located on the Start Menu).  
The PC will reboot, enabling you to select Troubleshoot.



2. Select Troubleshoot > Advanced options> Startup Settings.

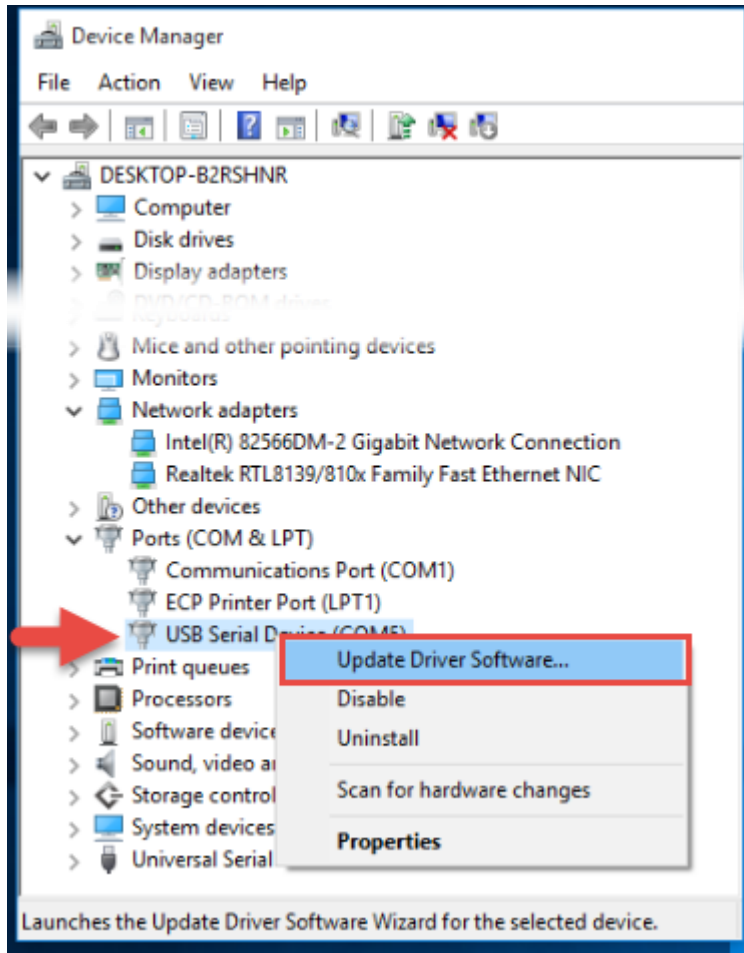


3. Click Restart, and when Startup Settings opens, press F7 to disable driver signature enforcement; upon restart, digital signature enforcement is disabled.

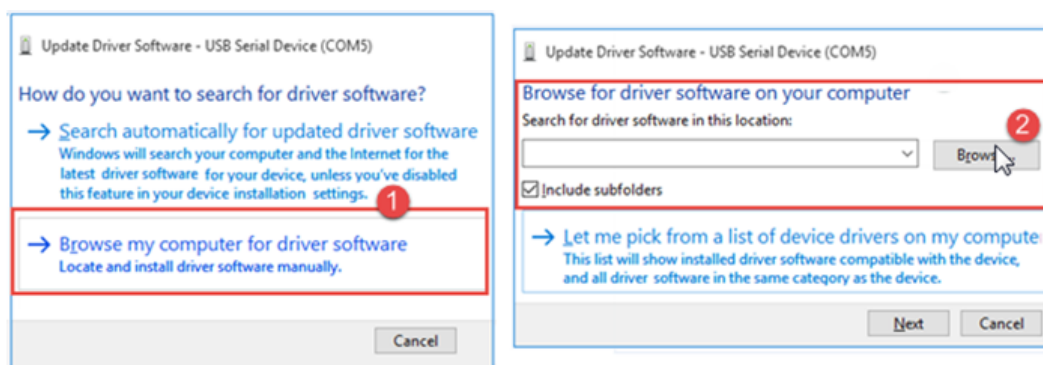


## Manually Installing Driver, Windows 8/10

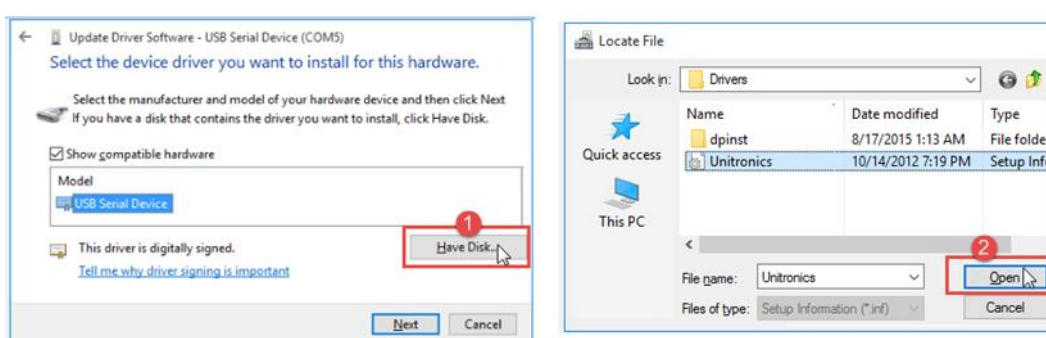
1. After you install UniLogic, connect your UniStream to your PC; and then open Device Manager.  
The connected UniStream will appear as a USB Serial Device; right-click it and select Update Driver Software.



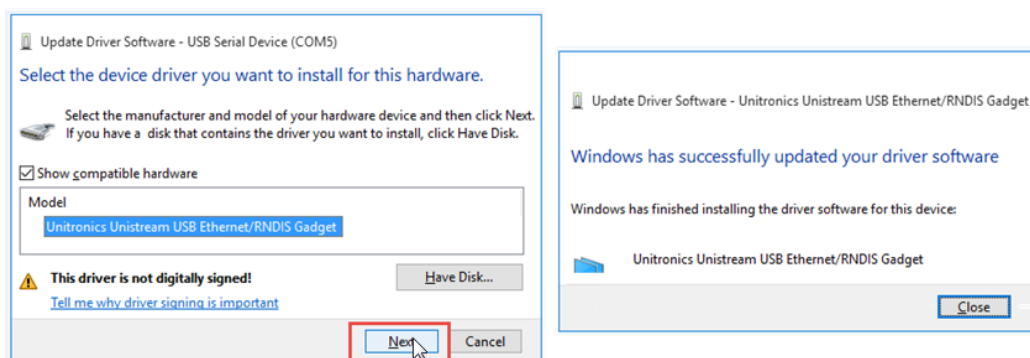
2. Select Browse my computer software; then click Browse.



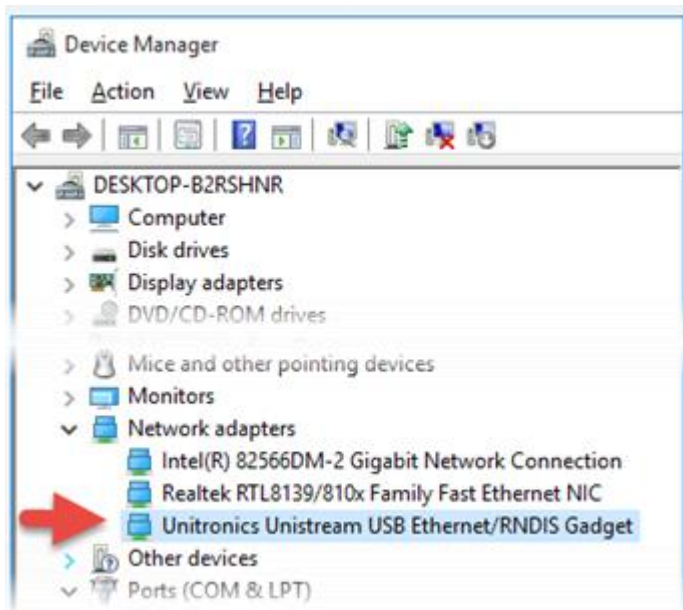
3. Click Have Disk, and then navigate to the driver location, typically C:\ProgramData\Unitronics\UnLogic\Drivers and then click Open..



4. The correct driver should now appear under Model, click next to install it. If Installation is successful, Windows displays a Success message.



5. Check Device Manager; the driver should now be listed under Network adapters.



## **Known Issues**

Windows Versions and UniLogic Project Issues

The UniLogic installation uses different databases:

- Windows XP uses SQL 2008
- Window 7 and up use an internal database.

This causes issues when porting complete UniLogic projects, individual Ladder functions (UDFBs), and HMI screens:

- Opening a project that was written in Windows 7 (or later) in Windows XP will cause UniLogic to shut down.
- Trying to upload a project into XP that was downloaded using Windows 7 (or later)
- Importing Ladder functions and HMI screens that were written in Windows 7 (or later) in Windows XP will cause UniLogic to shut down.