

# RELEASE NOTES: SERVICE PATCH

UNILOGIC® V 1.35.227  
UNISTREAM® OS 1.35.47

JANUARY, 2024

This version of UniLogic, released in January 2024, provides security enhancements to protect networked controllers from cybersecurity threats.

(Special thanks to Noam Moshe of Claroty Research - Team82.)



Note that the Equipment Level cybersecurity measures described in the Unitronics' document hosted on our website, '[Unitronics Cybersecurity for UniStream PLC Series](#)' are now mandatory.

In addition, the Network Level protection measures described in that document, including using a VPN to secure communications and protect equipment, are strongly recommended. Implementing Network Level protection is the responsibility of the user. This version of UniLogic requires you to change the default PLC communication password and to implement complex password. In addition, this version requires you to implement a VNC password.

Unitronics strongly recommends that users with existing applications comprising networked UniStream controllers update to the current version.

## Security Features

<b>PLC Password</b>	<p>As of this version, UniLogic <b>requires</b> you to change the default <a href="#">PLC communication password</a>, and requires you to assign a complex password the first time you establish UniLogic to UniStream communications to a particular PLC, for example at application download, or to run online Test mode.</p> <p>The PLC password must be at least 8 characters long and must contain at least 1 digit, lower case letter, and upper case letter, in addition to at least 1 symbol.</p> <p>Once a password is assigned to the PLC, UniLogic stores that password for that specific user (the user currently logged into Windows).</p> <p>When any user attempts UniLogic to UniStream communications, UniLogic authenticates the user access permission to that specific PLC.</p>
<b>VNC Password</b>	<p>As of this version, enabling VNC requires you to create a strong password. The option to enable VNC without a password has been disabled.</p>

## Additional Feature

<b>2 VFDs via RS485</b>	<p>Relevant for Built-in and UniStream PLCs, not UniStream Modular. You can now add 2 serial RS485 Add-on Ports to your hardware configurations, and define the port of each to VFD.</p>
-------------------------	--

## Bugs Fixed

- IO-Link:
  - RPI (Requested Packet Interval) was linked to the total number of linked devices, when should

be linked to the total number of masters.

- IODD files were sometimes incorrectly parsed

- Modbus Slave IP: in certain cases, updating a slave IP manually or via TCP did not write the new address to the Modbus slave.
- VNC Client, UniApps: the cursor was visible when Disable Cursor was turned ON.
- AOI, compilation errors: in certain circumstances, AOI rectangle coordinates were not assigned to the correct struct tags.
- UniLogic might shut down when a project was saved as 'Save As', reopened, and a module (HMI, Ladder, Web) was added.
- Web-server:
  - Copy&Paste of Numeric Box and Timer Box into a web page would cause UniLogic to shut down at compilation.
  - Numeric values were sometimes incorrectly displayed with thousands separators.
  - Numeric box: configuring Language> Regional Settings to show a thousands separator would show the separator in UniLogic, but the number would be displayed without the separator.
  - Numeric box: values configured as normal text would appear as bold text.
  - After editing, Web pages would sometimes appear with incorrectly-sized fonts, incorrect background colors, and incorrectly-underlined values.
- Quick Sync mode, Online: a project is verified **before** entering Online mode. For this reason, Quick Sync no longer reestablishes connection and re-verifies project.
- HMI Timer box: 'Text Before' would not be displayed if 'Text After' was not configured as well.
- Structured Text: using 'TO\_ REAL' inside a FOR Loop would cause a compilation error.
- Set DTI Column Value inside a ForEach loop causes compilation error.
- Load Config from INI: did not allow a remote URL to be set for the FTP client.
- C functions: creating a C function, upgrading the UniLogic version, and adding additional lines of code caused compilation errors.
- EDS files: Ethernet IP Structs with INT arrays did not load correctly in UniLogic 1.34.192.
- Changing COM port settings from UniApps: if the port was set to Modbus, the change did not take effect.
- SFTP client: PLCs failed to send files via SFTP when the password contained an ' (apostrophe).

---

**Change Summaries for Previous Versions begin on the following page.**

## UniLogic® Service Pack UNILOGIC® V 1.34.92 UNISTREAM® OS 1.34.78 October, 2023

The UniLogic version, released in October 2023 brings you the features and bug fixes listed below. Powerful new features include support for both IO Link masters and devices, Structured text, AOI, the ability to open and run up to 3 instances of UniLogic, and more.

This UniLogic version, released in October brings you the features and bug fixes listed below.

Powerful new features include support for both IO Link masters and devices, Structured text, AOI, the ability to open and run up to 3 instances of UniLogic, and more.

### New Features

<b>IO-Link</b>	<p>UniStream controllers now support IO Link.</p> <p>All UniStream controllers support the new Unitronics IO-Link Master products. Specific models of masters and modules as well as cables are available from Unitronics; these models are visible in UniLogic's Hardware Configuration. In addition to the specific IO-Link modules offered by Unitronics, you can include other IO-Link devices and import the device's IODD (IO Device Description) that is supplied by the device manufacturer.</p>
<b>Structured Text</b>	<p>UniLogic now offers a Structured Text editor, along with library of functions such as MAX MIN, LOG, EXP, Trig functions and more.</p> <p>You can build Structured Text functions and use them in the same way you use standard ladder or C functions. You can call them just like standard ladder functions, reuse them, and export/import them via the Library. You can also refer to Ladder functions.</p> <p>Structured Text:</p> <ul style="list-style-type: none"> <li>• Enables text-based development, that is compact and easy to read</li> <li>• Is highly portable--and allows you to copy developed functions from other brands</li> <li>• Allows easy comparison and source control</li> </ul>
<b>AOI (Automatic Optical Inspection)</b>	<p>New Compare Image Ladder functions now enable you to compare:</p> <ul style="list-style-type: none"> <li>• Images from a connected USB Camera to an image stored on the controller's SD card</li> <li>• Two images stored on the controller's SD card</li> </ul> <p>You can select the algorithm family and specific algorithm that the function will use to compare them. Algorithm families include:</p> <ul style="list-style-type: none"> <li>• Pixel-wise Comparison</li> <li>• Histogram Comparison</li> <li>• Template matching</li> <li>• Feature Detection and Matching</li> </ul>
<b>UniLogic: Multiple Instances</b>	<p>You can now open and run up to three UniLogic projects at the same time to compare them. You can also transport the following elements between them:</p>

	<ul style="list-style-type: none"> <li>• Drag &amp; Drop, or copy &amp; paste Ladder elements and rungs from one open UniLogic project to another open project.</li> <li>• Copy HMI/web page elements, including all of the elements on a screen/page, from one open UniLogic project and paste it into to another open project.</li> </ul> <p>Note that UniLogic automatically creates tags and structs as needed.</p>
<b>MC Motion Functions: Buffer Mode</b>	<p>The parameter Buffer Mode has been added to the MC Function Blocks listed below. Note that this mode is relevant only for Cyclic or Virtual Axis motion.</p> <ul style="list-style-type: none"> <li>• MC GearIn</li> <li>• MC GearOut</li> <li>• MC GearInPos</li> <li>• MC CombineAxes</li> <li>• MC MoveAbsolute</li> <li>• MC MoveRelative</li> <li>• MC CamIn</li> <li>• MC CombineAxes</li> </ul>
<b>Motion: Virtual Axis</b>	<p>In Motion &gt; Axis, you now have the option to add a virtual axis. You can then use it as a virtual machine shaft, master axis, or any other intermediate axis for complex relationships between master axes and slave axes.</p>
<b>Camera Ladder Functions</b>	<p>Camera ladder function Capture Image now includes Image Width and Image Height parameters.</p> <p>You can use this feature to capture images of the correct dimensions for AOI.</p>
<b>UniCloud</b>	<p>You can now use Asset Type as a template to:</p> <ul style="list-style-type: none"> <li>• Allow the share of a defined Asset Type on equipment using different types of hardware</li> <li>• Reuse configured dashboards without the need for using Tag Types</li> </ul>
<b>REST API</b>	<p><b>XML response support:</b></p> <ul style="list-style-type: none"> <li>• New Content Types: in addition to JSON, UniStream now also supports xml, Text/Plain, and x-www-form-urlencoded support</li> <li>• Requests: you can now select to accept JSON or XML for all request types.</li> </ul> <p><b>JSON Content Parameter Levels:</b> these have been increased from 3 levels to 5.</p>
<b>C: Online Mode and Global Tags Property</b>	<p>You can now:</p> <ul style="list-style-type: none"> <li>• Enter OnLine Mode when viewing a C function and view the value of individual tags, as well as view all of the struct member values.</li> <li>• Include global tags in your C code, enabling you to use them via online mode, without having to pass them as a parameter.</li> </ul>

<b>Quick Sync</b>	When in online mode, you can enter Quick Sync Mode then change logic and tag assignment.
<b>Router: Get/Set IOs</b>	New ladder functions enable your to read from and write to the status of I/Os on Unitronics B5 and B8 routers.
<b>Rung comments</b>	Double-clicking on the rail now allows you to add/open a rung comment.
<b>Tag Groups</b>	You now have the option to group global and timer tags. You can also right-click a tag group and rename it; all tags in that group will be automatically assigned to the new name.
<b>UniApps in Spanish</b>	The UniApps interface now supports Spanish; to display different languages in the UniApps interface, select the desired language in Hardware Configuration> Controller Model > Regional settings.
<b>Alarms</b>	There is now an option in Alarms Banner notifications to link a bit that turns on when the end user presses the Snooze button.
<b>LF: Load Config Ini</b>	<ul style="list-style-type: none"> <li>• MODBUS: You can now set ModbusTCP (IP Address, Port) parameters in your application via the Load Config - .ini ladder function.</li> <li>• Load from DOK: Load Config .ini now allows you to load a file from a DOK (USB stick) as well as from an SD card.</li> </ul>
<b>Ladder Elements: Up Down</b>	<p>Located in the Ladder toolbox under Basic Elements, these Ladder elements pass on the RLO of a rung--without being linked to a tag:</p> <ul style="list-style-type: none"> <li>• The Up element assigns TRUE to the output signal Out for one cycle only when the input signal In changes to TRUE. Otherwise, the value of Out is FALSE.</li> <li>• The Down element assigns TRUE to the output signal Out for one task period only when the input signal In changes to FALSE. Otherwise, the value of Out is FALSE</li> </ul>
<b>PC-PLC Password</b>	You can now change the PC-PLC communication password via UniApps> System> PLC >System > PLC Password.
<b>Project Password</b>	You can now assign a password that will be requested by UniLogic whenever anyone attempts to open the project.
<b>WE: Web Page Widgets</b>	Web Pages now support Time and Date widgets; configure them the same as you do HMI Time and Date widgets

## Additional Features

- When the VNC client is attempting to re-establish communications, a popup timer is now displayed, counting down the remaining time until retry.
- Modbus Slave IP addresses are now automatically updated when the IP address is changed via UniApps, a Load.ini file, via USBF, or via DHCP.
- C Editor: the status bar at the bottom now indicates both the line and the column location of the cursor.

- HMI Timers: a new option in the Timer Box allows you to enter any text you wish to set as a prefix to the numeral. You can also include special characters, such as a degree sign, by clicking the button on the right of the Text Before field.
- HMI/Web Numeric Box: you can now add a prefix of text and special characters to display in front of a numeric value.
- Arrays: you can now create arrays of up to 1024 elements.
- You can now export and import Switch Case instances.
- HMI Element File Selector: now includes an option to select the Camera Folder from the controller's SD card.

### **Bugs fixed in this version**

- Polish virtual keyboard: the 'Y' 'Z' keys location were transposed.
- Alarms: modifying alarms from CSV files did not properly update the Alarm Banner, and sometimes caused Alarms to crash.
- 04PTN: in certain situations, Input 0 would freeze.
- Message Composer: did not work properly when numeric tag format setting in the message is Leading Zeros
- Web Timer Box, Seconds format: value was not displayed correctly

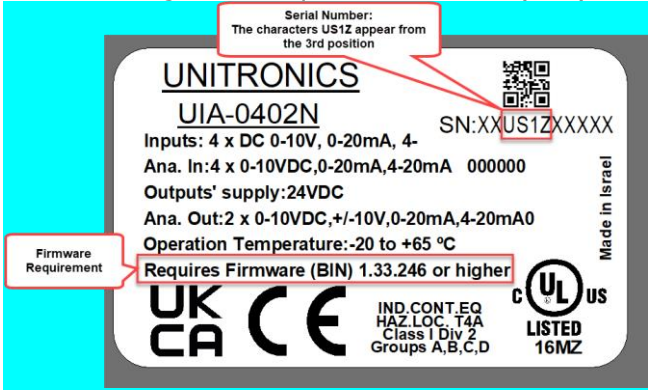
# UniLogic® Service Pack UNILOGIC® V 1.33.373 UNISTREAM® OS 1.33.280

## June, 2023

This UniLogic release, released in June 2023, includes firmware that supports a redesigned version of some UNI-IO models and hardens the Cybersecurity of your applications.

Read on to learn the details, and to see the bug fixes included in this version.

### New Features

<b>Cybersecurity</b>	<p>This security release hardens the UniLogic to UniStream communication mechanism, in order to reduce unauthorized access.</p> <p>Note that:</p> <ul style="list-style-type: none"> <li>• Older UniLogic versions (previous to 1.33.246), will not be able to communicate with controllers running firmware OS 1.33.246 and higher.</li> <li>• Attempting to download to a controller running older firmware will raise a warning, informing the user that the download cannot be completed until the firmware is updated.</li> <li>• If, for some reason, a firmware downgrade is required, use a USB stick as explained in the UniLogic Help topic Firmware&gt;How to Downgrade Firmware. You will not be able to downgrade via UniLogic ribbon &gt;PLC&gt; UniStream Management -&gt; Remote Upgrade</li> </ul> <p>In general, for better cybersecurity, we recommend that <b>you <u>always</u> use the <u>latest</u> firmware.</b></p>
<b>Uni-IO: Firmware Update</b>	<p>The firmware included in this release supports all Uni-IO models, modules bearing a label containing the following:</p> <ul style="list-style-type: none"> <li>• Serial numbers with the characters US1 start from the 3<sup>rd</sup> position, for example: XXUS1ZXXXXX</li> <li>• Text warning "Unit requires Firmware (BIN) 1.33.246 and up "</li> </ul> 
<b>Timer Box widget</b>	<p>You can now use more than 10 digits in the Keyboard Title property of a Timer Box widget.</p>
<b>New System Struct</b>	<p>A new System struct has been added, Regional Settings containing ASCII string members for CSV Delimiter, Decimal Symbol, and Thousands separator. At power-up, or when HMI language is changed, the controller will write the current regional settings into the struct.</p>

## Bugs fixed in this version

- Modbus RTU v2.0 did not update the RS485 port struct with TX/RX counters.
- Alarms group import did not preserve the exported alarm IDs.
- Export of alarm group would fail.
- Export screen in UniLogic would sometimes fail.
- Exporting IO tags to Excel would create an empty table.
- DataTable widget, Time format column, min and max limits were not applied.
- Linear gauge: Anchor and Range did not work for negative values.
- Radio button widget: did not work on web pages when Font size was applied.
- REST API GET: did not support an authorization token with special characters.
- UAC: Logged in users were sometimes logged out after download.

## UniLogic® Service Pack V 1.33.xx UNISTREAM® OS 1.33.xx MAY, 2023

This UniLogic version, released in May 2023, brings you new features including new HART functions ,DHCP, Motion functionality, and more.

Read on to learn about the new features and bug fixes in this version.

### **New Features**

<b>HART New Functions</b>	New Ladder functions for Build and Parse HART commands simplify implementing HART in your applications.
<b>Motion</b>	<ul style="list-style-type: none"><li>• EtherCAT Multi-Axis MC functions: a new Ladder element Get Cyclic Mode Error Description enables you to load the ASCII description into the linked ASCII string tag.</li><li>• Motion Status and error codes are now collected into a single topic for easier troubleshooting.</li><li>• CAM Table Plot: Select a CAM recipe, and from the Recipe tab, select Show CAM Table Plot, then use the Configuration tool to adjust the view.</li></ul>
<b>Password-Protect via Solution Explorer</b>	You can now right-click additional items on the Solution Explorer to password-protect many parts of your application, for example in Hardware Configuration, Communication, Motion, and more. The next time the project is opened, the password must be supplied before the item can be edited.
<b>DHCP</b>	New options in PLC Communications> Panel IP and UniApps> Network> IP Config> Panel DHCP now allows you to enable DHCP and, when DHCP is selected, to override DNS server.
<b>UniApps</b>	You can now: <ul style="list-style-type: none"><li>• View Logs for events such as download, upgrade, powerup in UniApps&gt;System&gt;System Logs&gt; Customer Logs.</li><li>• Filter Wireshark communications.</li></ul>



	<ul style="list-style-type: none"> <li>You can now see a connected EtherCAT firmware version and upgrade it - even if the PLC does not contain an application</li> <li>Set a PLC Hostname.</li> </ul>
<b>Languages, Regional Settings</b>	Regional settings for each language are now available via Solution Explorer> Languages.
<b>HMI and Web page Widgets</b>	<ul style="list-style-type: none"> <li>Radio buttons: You can now arrange radio buttons simply by entering the number of columns in the widget parameters; UniLogic automatically arranges the buttons in Columns.</li> <li>Data Table Widget now allows you to: <ul style="list-style-type: none"> <li>Set colors for Odd and Even Rows.</li> <li>Set Font Size.</li> </ul> </li> <li>File Selector: Camera files have now been added to the selection list.</li> <li>Timers, Minimum/Maximum: you can now set limits for timers.</li> <li>Text Boxes: you can now align text boxes in 9 directions.</li> </ul>
<b>HMI Screenshots</b>	In the HMI Editor>HMI tab> Screenshots, you now have the option to export all of the screens in your application at once as screenshots.
<b>I/O Module UID-0808THS</b>	New Scenario 4, Counter, PWM, PTO enables you to command trapezoidal motion at run time via the module struct.
<b>Loops</b>	A new Loop Data Block parameter, Is Busy, allows you to know the status of the block.
<b>Email: TLS</b>	When you configure an email account, a new column, TLS, in the account options can be checked to support Transport Layer Security ( <i>TLS</i> ).
<b>VNC</b>	The number of VNC clients that can connect to a PLC has been raised from 8 to 16; if the connection is via UniCloud, the maximum number of connections is limited to 8.
<b>Actions</b>	A new action, UAC Log out Request, enables logout as a result of ladder condition.
<b>Alarms</b>	<ul style="list-style-type: none"> <li>New LF: Get Alarm Name - use this Ladder element to get the name and description of an Alarm, according to its index number.</li> <li>Alarm logs: Previously, the Is Alarm Created bit and the the Last Alarm Log Zip Filename were only updated if Create Zip File was checked. Now, these parameters are updated even if only XML/CSV files are created.</li> </ul>
<b>USB serial devices</b>	UniStream can now support USB serial devices at a baud rate of 230400 bits/sec

 Please note that you cannot use the Rename File on SD Ladder Function to rename a file that is located in the Alarm Log folder. The Help topic has been amended to include this issue.

## Bugs fixed in this version

- WebServer Widgets set to Min/Max linked to constant tags did not work
- Update Application Ladder element did not work with String tag as path
- SMS Receive from Router (UCR) was only 7 words long
- Tags: Could not type non-Latin characters in tag description when creating new tag, however Ctrl+V could paste from external source
- REST: Requests with Hard-coded content parameters did not work
- Screen Saver configured to 'Power Off' mode on B10 Modular PLCs did not turn the display completely off
- If "MoveSDFileToDOK" on Copy\Move File ladder element failed, the reason (-8 no source file) was not displayed
- Changing COM port settings from UniApps did not have an effect if the port was set for Modbus
- HMI Schedule widget did not work in Custom Control

## UniLogic® Service Pack V 1.33.xx UniStream® OS 1.33.xx, November 2022

<b>REST API</b>	<ul style="list-style-type: none"><li>• UniLogic now supports REST API GET, POST, PUT, DELETE queries and the Authorization methods of No Authorization, Basic Authorization, OAuth 1.0, OAuth 2.0, and Custom Authorization.</li><li>• Content: you can now add JSON members and content to your POST and Put queries.</li><li>• You can now right-click a REST API request to duplicate it.</li></ul>
<b>USL Password</b>	You can now apply a password via UniApps that will be saved to the PLC via the new System> Password tab.
<b>Export BOM</b>	You can now generate a BOM (Bill Of Materials) report that matches the Hardware Configuration of your project by selecting the Tool tab on the ribbon and clicking Export Project's BOM.
<b>UniApps: Update</b>	Update App and firmware now allows users to scroll through and select desired files.
<b>VNC Server</b>	UniStream VNC server "Set Touch Bit" is now checked as default value; this allows the screen saver to recover from VNC.
<b>External Keyboard</b>	The interface for entering Numeric values and Text has been improved for external keyboards connected to UniStream.
<b>HMI Disable popups</b>	Via UniApps, users can now choose to ignore specific popup messages by selecting this on the System Log tab, and selecting the desired popup to disable.



Please note that you cannot use the Rename File on SD Ladder Function to rename a file that is located in the Alarm Log folder. The Help topic has been amended to include this issue.

### **Bugs**

- If the SD card was not found, the system would issue an I/O bus error although there would be no I/O error.
- In certain cases, the Router status was set to Fail inappropriately.
- Compilation warnings were issued for Alarms when one was not used in the application
- "Screen Power Off" mode on USP-070-B08 did not power off display as expected.
- UniLogic would crashes at compilation after a copy-paste call of a function with a Function-In parameter
- In certain applications, HMI screens could not be exported.
- In some cases, certain elements on Custom Controls did not work, or prevented HMI screens to load.
- HMI message boxes sometimes blocked HMI actions and buttons.
- Pasted ladder elements with constant inputs would appear invalid.
- Older applications using REST API, did not open with UniLogic 1.33.213
- Images and video from USB camera were not captured.
- Modbus: Success counter of Read operations would continue to increment after slave was disconnected.

- Trends, Web:"History" button on web pages did not work.
- UniLogic did not Download & Reset after REST configuration changes.
- Alarm Logs: the Is Alarm Log created was not set to ON if zip files were not selected.

## UniLogic® Service Pack V 1.33.xx UniStream® OS 1.33.xx, September 2022

### **Major Features**

<b>EtherCAT Motion: Multi-Axes functions</b>	When you use an Unitronics EtherCAT master module and configure the axes Mode to Cyclic, the master acts as a motion controller, generating the motion profile and controlling the drives to enable you to implement Multi-Axes functions such as Camming and Gearing.
<b>UniLogic Infrastructure</b>	<p>UniLogic versions previous to 1.33 were based on SQL 2012 LocalDB, which reached end-of-life and is no longer supported by Microsoft; therefore Microsoft will not patch possible security vulnerabilities in SQL 2012.</p> <p>After you install this UniLogic version, all projects of any version that are opened and saved on this PC will be automatically structured to SQL 2019 LocalDB.</p>
<b>EV Charger (OCPP) Support</b>	New Ladder elements now support and enable you to implement Electrical Vehicle Chargers Protocol (OCPP v1.6), the protocol is available only for UniStream Pro (B10/C10) series models and requires a license.
<b>Loops</b>	UniLogic now supports the following types of Ladder Logic Loops: For, For Each, and While. Users can manage the number of iterations per scan.
<b>Update UniStream Firmware and Application</b>	You can now update UniStream firmware and the UniLogic application via both UniApps and Ladder functions. The files may be located on either an SD card or an USB DOK stick.
<b>Camera: Capture</b>	New ladder elements allow you to capture images and video from a USB Camera
<b>Screen Saver Mode</b>	<p>Screen Saver is a new option in Hardware Configuration&gt;Controller Model&gt;Properties&gt;Screen Saver. When you check this, it enables the UniApps Screen Saver mode. Via UniApps, you can then activate Screen Saver to enable its options: you can power off the screen, and enable recovery via VNC.</p> <p>You can also set Wait time from last touch, when this timeout elapses, the screen will turn black. You can also control brightness to save power.</p>
<b>MODBUS Improvements, New Options</b>	<p>MODBUS has improved functionality, and supports new options:</p> <ul style="list-style-type: none"> <li>• Modbus&gt;Add New Operation now offers an Add New Batch Operation option.</li> </ul>

	<ul style="list-style-type: none"> <li>Floating point MODBUS registers can be swapped automatically during read or write operations.</li> <li>MODBUS RS485: when there are multiple slaves, and some of these are disconnected, the system performance is improved.</li> </ul>
<b>HART: New Features</b>	This version provides new HART Ladder elements: HART Command Builder, and HART Response Parser.
<b>Serial communication over USB: USB to RS485</b>	UniStream Built-in & UniStream PLCs now support specific HID USB to RS485 adapters, from Silicon Labs/DTECH and FTDI.

## **Additional Features**

<b>Protect Application Intellectual Property</b>	You can now include a specific UniStream's serial number in a Exported Project File. Attempting to install the file to a different controller using Update Application ladder functions will give error -9
<b>System Error struct</b>	Use the System Error struct to troubleshoot errors.
<b>System Events Log</b>	A log on the SD card located at SystemLogs/UniStream.log records major events such as download, upgrade, powerup, and more
<b>Data Sampler</b>	<ul style="list-style-type: none"> <li>The Data Sampler properties window now offers a new option, Sign Files. Check this to create a signature for your BIN/.csv files.</li> <li>The Data Sample struct now enables you to set a Delimiter character to be used in the CSV file</li> </ul>
<b>Alarms</b>	In Alarms general properties, you now have the option to create .xml, .csv, and .zip Alarm logs and sign them.
<b>Application Signature</b>	Via UniApps>System> UniLogic App, you can now view the App Signature in addition to the application name and version.
<b>Email</b>	<ul style="list-style-type: none"> <li>Composer: you can now include a string variable in email messages.</li> <li>Send email Timeout: You can now set a Timeout</li> <li>A new status message has been added to the email struct: - 10 unable to get local issuer certificate' when sending an email</li> </ul>
<b>SD/DOK Status Notifications</b>	When the SD/DOK is locked, or almost full, the system error struct is updated.
<b>Ethernet IP EDS</b>	EDS tags now include descriptions
<b>VFD</b>	VFD Run Frequency - the Frequency parameter is now an optional setting. When frequency is not set, the current set frequency will be used.
<b>High Priority Ladder Task</b>	High Priority Ladder Task now offers new Ladder elements: Reset counter + Reverse Counter
<b>SMS</b>	You can now add more than one contact in the SMS address list.

<b>User Files</b>	CSV and XML filenames inside a .zip attachment will now include the timestamp
<b>LF: Copy/Move folder to DOK</b>	A new FILE>Copy/Move folder to DOK ladder function allows you to move folders to a USB DOK.
<b>UCR Router</b>	New members have been added to the UCR Router Struct for Daily/weekly/monthly data usage counters  UCR Incoming caller ID identification has been added.

## **Minor Features**

- Structs: You can now right-click a Struct to duplicate it and edit its members.
- OPC-UA: You can now:
  - Import an OPC-UA file from the SD Card, not only from a DOK flash drive.
  - Set the OPC-UA namespace from UniLogic in the OPC-UA Settings
- URB: Allow to duplicate URB coupler structure and configurations.
- HMI and Web page element Actions now enable you to Reset a Numeric Value.
- UniApps: you can now import and export application configuration parameters from and to a DOK flash drive, such as FTP, email, modem, SMS configurations and more.
- UniApps clock, auto-sync: if you select auto-sync is ON, an attempt to sync the clock will now be made every 12 hours, in addition to every action that requires HMI reset, such as reboot, and download.

## **Bugs**

- Keyboard: would show Cyrillic-Serbian instead of Serbian-Latin
- Data Sampler: CSV+Zip would not be saved to history on power-up.
- Online Mode:
  - did not disconnect when updating the application from a ladder
  - when using constants, incorrect tooltips were displayed
- SQL DT->SQL: would fail when DT "From Row" was above INT16
- UniLogic C Function: When referred to a struct, wrong comments were added
- UniCloud: Creating an Asset on the PLC causes HMI Overload on some scenarios
- USBF action: Change Password was not working
- Servo:
  - Servo Homing Method – Positive and Negative velocity were greyed out
  - Importing a motion application could cause the UniLogic to crash
- HMI: HMI Overload occurred after reboot when Start/End Sampling bit was on at start-up
- Router Success bit and Signal Quality did not update when there was no connection
- UniApps->Network->Serial: only the first serial port was available
- VNC: Connection count and Connected Bit did not update after disconnecting
- BACNet:
  - I/O properties were not saved
  - Server IP did not refresh automatically
- OPC-UA: Will not require reset on every download
- Remote upgrade was not cancelled after the connection was made to PLC
- UniLogic, PC-PLC Communication: when download port 22 was incorrectly configured, UniLogic approved PC-PLC Communication with a green checkmark and provided inaccurate communication error messages
- Email:
  - Mail Configurator Widget did not add recipients to email

- Sending an email with multiple TO/CC/BCC would fail if the 1st address was an empty string
  - Send email from UniApps - always sent from the first account
- SFTP Client: would fail due to Failure establishing SSH session
- MQTT: Wildcards having 'A/B/+ /+/C' did not work correctly
- CANopen:
  - Did not send 2 SDOs in a row
  - A sequence of "Init Node EDS" ladder functions being executed one after another could cause a CPU error
  - CANopen Auto-Start could cause a CPU errors
- UniCAN:
  - Incoming messages were lost
  - After CANBus Disconnection, there's no need to reset PLC to re-establish the communication
- Modbus Master on USB port would sometimes stop working
- Alarms: suppressing Alarm with ID higher than 255 did not work, and would suppress the wrong Alarm
- CSV: Convert CSV to UDTF failed after download
- I/O:
  - UIA-0402 outputs did not work properly
  - UIS-08TC did not show temperature when "Noise Rejection" set to 10 Hz. Other values worked properly.

## UniLogic® Service Pack V 1.32.xx UniStream® OS 1.32.xx, January 2021

This service pack brings you the features and bug fixes listed below.

<b>VNC Server Management</b>	<ul style="list-style-type: none"> <li>• 'Portrait Mode', UniStream PLC and UniStream Built-in: Portrait Rotation is set to 90% by default.</li> <li>• VNC Server Management has been moved from Passwords to its own location on the Solution Explorer tree, directly under PLC Communications.</li> <li>• The VNC Server Password is now in this section, and not in Passwords.</li> </ul>
<b>SD Management</b>	<ul style="list-style-type: none"> <li>• Note that the option '<b>Is Rule Enabled</b>' is now checked by default for all file types for all projects. In addition, updating an older project will check the option for all file types.</li> <li>• SD management has been moved up the Solution Explorer tree to a new location, directly under Hardware Configuration.</li> </ul>
<b>TCP/UDP Socket</b>	CPU communications: a project that uses TCP or UDP Tx functions must also contain an Rx function. UniLogic now issues a compilation error if Rx functions are not included in the project.
<b>SMS</b>	You can now include up to 10 numbers in the SMS number list.
<b>VNC</b>	The System>General tag Number of VNC Connections will be initialized when the system recognizes that the Ethernet cable is disconnected, turning the System>General tag bit Ethernet Port Link OFF for the port.
<b>New Help Topic ERRNO</b>	UniLogic provides ERRNO - Error Codes that report and retrieve errors for Ladder functions.

## Bugs fixed in this version

### UniLogic

- Animated .gifs: previously, in cases where a display contained more than one language, UniLogic did not check the number of animated .gifs per screen; the limit per screen is 4. UniLogic now issues a compilation error for all displays containing more than 4 animated gifs.
- CANopen EDS files containing space characters would fail to load; UniLogic now compensates for spaces.
- Router struct name can now be edited after re-opening a project.
- UniStream PLC: setting/changing passwords via USB did not always work properly.
- Data Sampler: CSV+Zip was not saved to history on power-up.
- Remote upgrade: the user could not cancel remote upgrade after the PLC was connected.
- Unnecessary compilation error was given when the last I/O module was removed from the configuration.
- Find in Array Back ladder function could not search for a bit data type.
- Mail Configurator Widget failed to add recipients to emails.

### UniStream

- Alarms: selecting an Alarm ID higher than 255 would result in the wrong Alarms being suppressed.
- Disconnecting/Reconnecting I/O might cause a CPU Error.
- Ethernet/IP counters: values were not stored.
- UniApps, RTC auto-sync: would stop working after 24 hour. Now, when auto-sync is on, the controller will attempt to synchronize the RTC every 12 hours, and at every PLC reset.
- CANopen:checking the Autostart option would cause CPU errors.

## UniLogic® Service Pack V 1.32.xx UniStream® OS 1.32.xx, December 2021

## Features

### HMI: New Action

Use Reset Numeric to enables your users to reset a value via the HMI.

### Find

- Finding 'Todo': searching for ToDo now includes Region Comments.
- You can now also search for text in Comments
- The Find Results pane now maintains a history of up to 15 searches.



<b>LF: Struct to/ from Buffer</b>	These functions now work within UDFBs, as 'Function In' elements.
<b>Message Composer</b>	You can now right-click Devices and Messages and export/import them between applications.
<b>BACnet IP</b>	Via UniApps, the user can: <ul style="list-style-type: none"> <li>• Enable/Disable BACnet</li> <li>• Set Object ID from UniApps</li> </ul>
<b>Ethernet/IP</b>	When exporting an EDS file that contains ASCII strings, a message now appears to recommend that the user convert the string using the Tag to Buffer Ladder function, thus enabling the strings to be exported.
<b>email</b>	<ul style="list-style-type: none"> <li>• The list of elements that you can include in an email now includes String Variable.</li> <li>• email Recipients: Strings can now display recipient addresses.</li> <li>• If the 'From' field has been left blank, a compilation message now appears.</li> </ul>
<b>Alarms</b>	Alarm widget: 'Severity' columns can now be translated
<b>OPC-UA</b>	You can now Export/Import Address Space.
<b>MODBUS</b>	Now, as you add/delete each Modbus operation, UniLogic increments/decrements their number.
<b>UniApps, VNC Server</b>	UniApps>Networks> VNC Server now displays a list of up to 8 connections. When the list exceeds 8, the controller automatically disconnects.
<b>FTP/SFTP Passwords</b>	Cases where the programmer uses illegal characters in creating a password now display a warning, and also gives a compilation error.

## Bugs fixed in this version

### UniLogic

- Motion:
  - In certain situations, compilation would fail due to the Drive struct
  - Adding the Servo and VFD diagnostic applications caused a compilation error
- Tag Import: duplicating a tag name that was used as an alias would crash UniLogic
- DOK: in certain cases, updating the DOK would crash UniLogic
- XY Trend: background was not transparent when selected
- UniStream keypads: if two keypads were opened on screen, the first remained onscreen, but was not responsive
- 'Load config from INI': DNS settings were not always supported
- HMI, .gifs per screen: a message now appears to warn the user if the number of gifs exceeds the recommended level.
- Functions called via Switch Case: would be mistakenly given a compilation warning.
- UniStream model, webserver: if the PLC model was changed from one that supported webserver to a model that did not, the user would be warned that webpages would be deleted--even if the project did not contain a web server configuration.

### UniStream

- Downloading a blank application (download + Reset) might cause a CPU Error
- BACnet Server IP - Binary Value/Input object did not allow writes

- VNC Server:
  - after downloading certain projects, VNC server did not allow connection
- - when VNC server resolution was changed in UniApps, the resolution was not retained after reboot
- SMS: If a phone number was not set, Sending SMS via Router provided an incorrect error ( SMS\_ROUTER\_GENERAL\_ERROR = -7) when the correct error was SMS\_TEL\_NUM\_ERROR = -3 (
- VFDs: :
  - writing configuration files to 2 VFDs resulted in a CPU error
- -VFD is Connected bit sometimes rose to True too early, before the authentication process had been completed.
- IO module (UID-W1616R) power LED blinked in certain cases where Message Composer was included in the project
- UniStream Built-in - in cases of Boot error, a 'check physical connection' was incorrectly displayed; this has now been replaced with a 'Contact Support' message.
- Mail Configurator Widget: selecting To/Cc/Bcc resulted in 'HMI Application Overload'
- FTP client: failed to connect when the \$ symbol was used in the password
- Rest API: Send Value requests sometimes resulted in outdated values being sent

## UniLogic® V 1.32.00 UniStream® OS 1.32.00

### Features

#### **VFD: Ready-made VFD Motion code**

UniLogic's Ready-made VFD Motion code enables you to get moving immediately—and does most of the work for you.. The application includes both Ladder & HMI screens to enable you to run Diagnostics. You can also edit it to suit your application.

You simply import the code, call it into your application, download it—and start moving.

#### **HE: VFD Drive Selector Widget**

Place this widget on an HMI screen to enable the end user to select a VFD drive via the UniStream panel.

#### **Data Tables**

LF: DTI to File

You can now select to retain formatted files: .csv .udtf, and csv.zip files.

#### **UniCloud: GPS Router Support (s**

\*\*\*Note that this feature is not yet supported in UniCloud, but will be included in a future version. When you created a UniCloud Asset type, you can enable Router Settings> Use GPS Location.

If your UCR Router supports GPS, this will cause the Asset location to be harvested along with all of the other Asset data.

### Bugs fixed in this version

- DOK: Safely removing a DOK (USB memory stick) would cause an incorrect message to be displayed.
- Ethernet/IP EDS:
  - • EDS Import functioned improperly in certain cases of tag conversion and Assembly arrays.

- I/O struct names would appear editable upon reopening project.
  - Short string import might cause an error
- Log upload: in certain cases, passwords were not correctly validated.
- Alarm History Widget: was empty after re-boot.

## UniLogic® V 1.31.177 UniStream® OS 1.31.69

### Features

<b>Store DTI to file</b>	As of this version, the defined decimal format is retained for .csv files.
<b>Export Data Table to File</b>	Array member names are now visible
<b>Languages</b>	This version contains Polish language additions
<b>MQTT</b>	As of this version, MQTT subscriptions ending with '+' are supported.

### Bugs fixed in this version

- VNC: the value in Number of Connections was reset after a disconnection.
- UIS 04PTN: incorrect values were shown
- VFD Configurations: attempting to write configuration values to multiple VFDs might cause a CPU error
- Data Tables, UniLogic: when defining Data Tables in Web server, the text 'Undefined' was displayed instead of the actual value.
- EtherCAT: Adding a new PDO would sometimes cause UniLogic to crash

## UniLogic® V 1.31.70 UniStream® OS 1.31.60, June 2021

<b>UniCloud, New Feature Support</b>	<p>This version supports new UniCloud widgets <b>Switch</b> and <b>Update Asset</b>.</p> <p>Note that in order to use them you must update your UniStream OS, included with this version of UniLogic; in addition, note that the tags in the Asset type must be set to Read/Write.</p> <p>For full details regarding UniCloud updates, log into UniCloud.io and open the Help menu. Version changes are listed in the Welcome topic</p>
<b>UniApps: Auto-Sync RTC</b>	<p>You can now sync your PLC's RTC with the current time for your time zone with the server at <a href="https://worldtimeapi.org/timezones">https://worldtimeapi.org/timezones</a>. A new option, Auto-Sync, enables a PLC with an internet connection to remain synchronized with the server, and automatically change to/from Standard to Daylight Savings time.</p>
<b>New Ladder Element</b>	<p>The new Ladder element Read Line from File enables you to this to read a line from a file on the SD card into a buffer.</p>
<b>Controller Popup Messages</b>	<p>System Popup screens for HMI Overload now provide instructions to the user</p>

<b>XY Trends</b>	In XY Trends Curves, you can now set the Y-axis to REAL, using up to 6 decimal places.
<b>CSV Decimals</b>	In CSV files, REAL numbers can now show values including up to 6 decimal places

### Bugs fixed in this version

- Ethernet: changing serial remote slaves ID via UniApps caused the remote slaves list to be empty
- MQTT:
  - After broker reconnection, subscriptions did not work properly
  - Certificate import sometimes caused brokers to be automatically created
  - HMI Overload screen would be displayed, when MQTT auto-connected to broker and Connection interval is 0
- REST API Queries: INT16 and INT8 could not be used in query parameters
- REST API Requests: using tag parameters after hard-coded parameters did not work properly
- DT columns, HMI widget: column headers did not display properly after scrolling left and right
- Ladder comments: could not be opened if comment height was insufficient
- Download: in certain circumstances, projects would crash when compiling a project for download
- Keyboards connected to UniStream via USB port did not recognize certain characters
- UniApps:
  - Serial configuration could not be edited.
  - VNC: after changing the VNC server resolution from UniApps and rebooting, the resolution was not retained
- Alarms:
  - Banner, 15" UniStream: Text frame was incorrectly sized, when using "by Highest Severity" banner color mode.
  - Alarms occasionally crashed in certain situations.
- email: in certain cases, the 'fail' indication was set to ON, even though the email was successfully sent.
- UniLogic Hardware Configuration:
  - a popup for I/O UID-0808T upgrade would be displayed, even when the UID-0808T was not included in Hardware Configuration
  - Compilation error: in certain circumstances, a compilation error was shown if UAG-CX-XKPLXXXX was included in Hardware Configuration
- Router: When the router is disconnected from the controller, the Router Success bit and Signal Quality value remained unchanged.

## UniLogic® V 1.31.146 UniStream® OS 1.31.122, March 2021

### Features

<b>REST API</b>	REST API now supports: <ul style="list-style-type: none"> <li>• HTTPS Servers.</li> <li>• The Buffer data type, in the Response parameters.</li> </ul>
<b>MQTT</b>	Broker Connections now support MQTT/SSL -- Google Cloud IoT

<b>UniApps</b>	<ul style="list-style-type: none"> <li>• MODBUS: in UniApps, under Network&gt; MODbus, you can now access Ethernet Master and Slave with an ID#=0.</li> <li>• HMI Reset: in cases where the HMI application requires reset, the re-designed message screen now instructs you to extract the system log to USB or PC, so that you can send it to Unitronics Support.</li> </ul>
<b>Alarms</b>	<ul style="list-style-type: none"> <li>• Show Suppressed State in Alarm Summary and History: if, in the Alarms global Properties, you check the option Show Suppressed Alarms, 'Suppress' will be displayed in the Value column for suppressed Alarms.</li> <li>• German: Alarms Status, History, and Summary may now be viewed in German</li> </ul>
<b>Project Signatures</b>	The signature log has been expanded to include: import of Ladder, HMI, Web, Message Composer, Formula, Import Data Sampler, Remote Modbus Slave, and Alarms, as well as converting HMI displays to Web pages

### Bugs fixed in this version

- PLC communication password: In certain cases, UniLogic requested a password when no password was required.
- REST API: in some cases, slashes at the end of End Point Resource were ignored.
- Alarms:
  - Version 1.31.125: names were not preserved at import.
  - If a user cancelled Alarms Export, UniLogic showed an 'Alarm Export Failed' message.
  - Alarm headers occasionally aligned incorrectly
  - In certain circumstances, icons did not display at 1024x600 resolution
- Ethernet/IP:
  - In certain cases, importing an Ethernet/IP EDS file containing bit arrays caused errors.
  - In certain cases, an Ethernet/IP EDS file exported with minor Errors (set Run Idle bit).
  - Commas used in parameters names were incorrectly read as delimiters.
- HMI Editor, Panel Orientation:
  - Changing models sometimes affected panel orientation (landscape/portrait)-When the project was based on UniStream PLC (USC) models, changing the panel orientation sent the UniLogic window backwards.
  - In portrait mode, the Title of the Alarm History widget overlapped the CLR button.
- Structs:
  - Minor errors sometimes occurred in autocomplete.
  - Adding a Description with two lines caused a compilation error.
- In Hardware Configuration, the URB module URA-0008Y was shown as AO08W.
- WebServer: occasionally projects including webserver showed an error after download.
- Including the character " \" in the Caption in the Properties window of an HMI or Web Data Table caused an "Error while reading data", and in certain may have caused a CPU error.
- Remote upgrade: changing to another IP without refreshing before beginning the upgrade would cause the window to close.
- In certain cases the controller required HMI reset; in most cases, the controller will now recover without user intervention.
- URB modules were sometimes missing from Function In after re-opening project
- OPC-UA: operands sometimes did not update correctly.
- BACnet: operands sometimes did not update correctly.
- Alarm headers occasionally aligned incorrectly.
- UniCloud: Sync Asset Type with UniLogic automatically created structs

## UniLogic® V 1.31.116 UniStream® OS 1.31.94

This is a Service Pack for version UniLogic 1.31 Rev106 and UniStream OS1.31.81 released in January 2021.

### Features

- UniStream 'Cloud' controllers: All 'C' series model numbers are now available in Hardware Configuration. UniStream 'Cloud' controllers are an industry first: a PLC with built-in, no-cost cloud services. Each UniStream Cloud PLC is supplied with a pre-paid 5-year Start-up Subscription plan-there is no monthly subscription fee.
- You can now export the error and status messages generated in UniLogic, via new Export to Excel tab in the Error window.
- New Baud Rate added to CANbus: 100Kbit/s

### Bugs fixed in this version

- EthernetIP: could sometimes not upload an EDS file.
- Modbus TCP: did not support Unit ID 0.
- OPC UA: would sometimes duplicate Tag names.
- Application import did not work in certain circumstances.
- In certain cases, older applications did not open.
- Emails: in certain circumstances, the controller did not send emails.

## UNILOGIC® V 1.31.106 UNISTREAM® OS 1.31.81

Unitronics first 2021 Release supports EtherCAT, the industrial fieldbus protocol that drives powerfully precise processes in factories across the globe, is now easily implemented by UniStream® PLC\* series.

Our new EtherCAT Master module enables you to integrate:

- **Unitronics EtherCAT Servo\_Drives**  
When you use a Unitronics drive, EtherCAT data exchange is transparent. You can implement motion using UniLogic's Motion function blocks. A single UniStream can support up to 8 drives. Plus, you can easily adapt any Motion application based on CANopen to EtherCAT simply by making a few changes in Hardware Configuration
- **Unitronics URB EtherCAT adapter**  
Via an EtherCAT URB adapter, you can communicate with Unitronics URB Ethernet-based I/O modules
- **Third-party EtherCAT slave devices**  
You can import a device's definition file, and exchange data via Ladder using SDO requests.

A single UniStream can support one EtherCAT master module, which can support a total of 32 EtherCAT nodes. This includes EtherCAT Servo drives, Remote URB adapters, and third-party EtherCAT devices.

\*EtherCAT is currently supported by USC-B5 and USC-B10 only.

### Features

#### **EtherCAT Master Module**

\*Required for ALL EtherCAT communication

Hardware Configuration now offers a new EtherCAT Master Communication module, the UAC-01EC2.

This new COM master module enables you to base Motion applications on EtherCAT, to use Unitronics' URB I/O via EtherCAT, and to include third-party EtherCAT device in your applications.

#### **Servo Motion via EtherCAT**

You can now use Unitronics new EtherCAT Master module in conjunction with Unitronics new UMD-E3 EtherCAT servo drives to easily build Servo Motion applications.

All of UniLogics' PLCopen-compliant MC Function Blocks are supported over EtherCAT as well as Ready-Made Motion code.

#### **URB EtherCAT Adapters**

Hardware Configuration now offers the URB-EC1 EtherCAT adapter, which can support up to 16 URB I/O modules per adapter.

#### **Third-party EtherCAT**

You can import the ESI file of a third-party EtherCAT device and include it in your application, communicating data via EtherCAT SDO Read and Write Ladder functions.

#### **URB TCP Adapter LFs**

New Ladder Elements enable you to reset, and to set the timeout of, a URB TCP module.

#### **UniCloud**

This release is the first to support UniCloud, a complete, no-code IIoT Cloud Platform specifically designed for the OEM and Machine Builder.

#### **Export Project File**

You can export a complete project to a local or external drive, and then import/upgrade the exported Project File into any number of PLCs as a new project, or use it to update an existing base project. You can import a project file via UniApps, or via a new Ladder function, Update Application.

### Additional Features

<b>Alarms</b>	<ul style="list-style-type: none"> <li>• <b>Banner Color Mode:</b> a new property in the Alarm Property Window enables you to assign an Alarm banner color according to the highest (severity) active alarm level, instead of a fixed color.</li> <li>• <b>Alarms Struct:</b> new tags enable you to keep track of the count of the number of alarms in the Alarm History and Alarm Summary.</li> <li>• <b>Alarm History Widget, Clear Button:</b> in the widget properties, the new Show Clear Button enables you to display a CLR button that can be pressed by the user to clear the Alarm history.</li> </ul>
<b>OPC UA</b>	You can now set tags to read /Write or to Read only in the Address Space window; under Access Levels.
<b>Ethernet Favorites</b>	These can now be saved within your project.
<b>Ladder Rungs &amp; Comments</b>	You can now drag the borders and resize them.
<b>Data Tables</b>	<ul style="list-style-type: none"> <li>• A new parameter, Digitally Sign file, in the Ladder function Store DTI to file enables you to assign a Data Tag to determine whether or not to digitally sign the file: 0 = Don't sign 1 = Sign</li> <li>• Improved Array appearance</li> </ul>
<b>Buffers</b>	<ul style="list-style-type: none"> <li>• The functions Tag to Buffer and Buffer to now support a BIT array tag type.</li> <li>• Buffers now support Load from Array and Store in Array.</li> </ul>
<b>XY Trends</b>	<b>View Data Values:</b> Your users can now touch the curve and view the sampling value & time while an XY Trend view is in Stop mode. Touch View Data, then touch the active curve to display two yellow lines that intersect at the touch point. Use the arrows to move the point along the curve.
<b>Ladder: Find element via F12</b>	<p>If you select one of the following elements in the Ladder, you can press F12 to find all instances.</p> <ul style="list-style-type: none"> <li>• Call function ladder element</li> <li>• Switch case ladder element</li> <li>• Jump to region</li> <li>• Formula</li> <li>• Send SMS</li> <li>• Receive SMS</li> <li>• Send mail</li> <li>• SQL elements</li> </ul>
<b>Toolbox</b>	You can now search for toolbox elements while in online mode
<b>Ladder</b>	Right-click any Ladder element and select Pin to Bottom Bar to add it to the Ladder element bar at the bottom of the Ladder Editor
<b>Trends, Curve Width</b>	During runtime, the Trend represented on the panel now offers a button that the user can press to toggle the width of the curve line.



## Bugs fixed in this version

- EthernetIP Node Struct: when adding a Scanner node using an EDS file, the new 'Config' tag did not appear hyperlinked
- Importing tags from Excel did not always function correctly.
- Application Download: in certain cases, users could not download applications, in version 1.30
- WebServer: Press /Release button function did not work as expected on mobile device browser
- BACNet server: appeared to be in Init status, although it was running
- Modem Signal Quality: if a Modem and a Router were in the same application, the signal quality was reported incorrectly
- Trends: in certain circumstances, using the Time Span option caused the system added an 02 before the actual time in X axis
- UAC Account would sometimes lock in certain circumstances after downloading an application
- XY Trend: a user needed to Stop the Trend in order to switch to the next curve
- Ping Ladder element Time out did not take effect, affect when pinging from the CPU
- UAC Idle timeout did not work from VNC
- A Compilation Error would appear at download if the file name in Write VFD Parameters was changed
- Alarm History Widget: would stop presenting new data after approximately 10 days
- Network Error sensitivity improved

## **UNILOGIC® V 1.30.62 UNISTREAM® OS 1.30.51**

This is a Service Pack for version UniLogic 1.30 Rev62 and UniStream OS1.30.51 released in December 2020

### **Bug Fixes**

These bugs are fixed in this service pack:

- In certain cases, UniStream PLCs (USC series) could not boot up due to SD card installation errors.
- UniLogic HMI Editor: the HMI Element Properties window loaded slowly when moving between elements.

## **UNILOGIC® V 1.30.58 UNISTREAM® OS 1.30.43, September 2020**

This is a Service Pack for version UniLogic 1.30 Rev52 and UniStream OS1.30.31 released in September 2020

### **Bug Fixes**

These bugs are fixed in this service pack:

- PTO sometimes functioned incorrectly
- VNC Server:
  - Using a direct contact element for the "General.VNC Touched Bit" would cause a compilation error
  - Checking the "App resolution" checkbox would cause the "With cursor" and "Set 'Touch bit'" checkboxes to be disabled
- Library, C functions: importing a C function from the Library would cause UniLogic to delete the code from other C functions in the project

### **Improvements**

- Trends:
  - Trend widget loads faster
- Now supports axis values
- Global tag import: now includes a 'Cancel' import option
- REST API:
  - if the Base URL is invalid, UniLogic now gives a compilation error
  - REST API compilation errors now allow you to click in the error list directly to the error location

## UNILOGIC® V 1.30 REV52 UNISTREAM® OS 1.30.31 September 2020

Unitronics Fall 2020 release launches a new member of the UniStream series: a UniStream Built-in controller with a big 10.1" panel offering 1024 x 600 (WSVGA) resolution.

As a PLC + HMI + I/O, UniStream 10.1 is available in a broad range of expandable, built-in I/O configurations, and is available in Standard (B5) and Pro (B10) models. Both models support advanced communications, including MQTT, VNC, FTP, SNMP, email and SMS messaging. The Pro version also offers built-in Webserver, video support and SQL.



UniStream Built-in benefits include auto-tuned PID, data logging, data tables and recipes, data sampling displayed via built-in Trends and Gauges, Alarms, multi-level passwords, portrait mode, and plug & play communications for CANopen, CAN Layer2, MODBUS, EtherNet/IP, Servo made Simple, and more.

Other release features include support for:

- New USL external VNC display panels for UniStream: 'big-screen' USL 15.6" & USL 10.1"
- REST API
- PTO, via I/O Module UID-0808THS

### New Hardware

#### **NEW**

#### **UniStream Built-in 10.1**

With a big, 10.1" Panel offering 1024 x 600 (WSVGA) resolution, UniStream 10.1 is available in a broad range of expandable, built-in I/O configurations - available in Standard (B5) & Pro (B10) models.

Both versions support advanced communications including MQTT, VNC, FTP, SNMP, email and SMS messaging. The Pro version also offers built-in Webserver, video support and SQL.

UniStream's built-in benefits include auto-tuned PID, data logging, data tables and recipes, data sampling displayed via built-in Trends and Gauges, Alarms, multi-level passwords, portrait mode, and plug & play communications for CANopen, CAN Layer2, MODBUS, EtherNet/IP, Servo made Simple, and more.

Model Family: <span>Built-in</span>			
Built-in	Pro	10"	Selected PLC
Standard >	5"/7" >	US10-B10-B1	<b>US10-B10-RA28</b> 10" HMI panel + built-in CPU + built-in I/O configuration Built-in ports: 1 Ethernet, 1 USB host, 1 mini USB programming port, audio-out jack Add-on ports: Compatible with UAC-CX modules Built-in I/O Configuration: 14 Digital inputs, 24VDC, sink/source, including 2 High speed counter input channels 2 Analog inputs, 0-10V / 0-20mA / 4-20mA, 14 bits 2 Temperature inputs, RTD / Thermocouple 8 Relay outputs 2 Analog outputs, 0-10V / -10-10V / 0-20mA / 4-20mA, 12 bits I/O Expansion: - Uni-I/O Local Expansion - URB Remote I/O - EX-RC Remote I/O
Pro >	10" >	US10-B10-TR22	
		US10-B10-T24	
		US10-B10-TA30	
		US10-B10-RA28	
		US10-B10-T42	
		US10-B10-R38	



Models	Features
US10-B5-B1 US10-B10-B1	No built-in I/Os
US10-B5-TR22 US10-B10-TR22	10 Digital, 2 Analog Inputs, 2 Transistor outputs, npn, including 2 PWM outputs. 8 Relay outputs
US10-B5-T24 US10-B10-T24	10 Digital, 2 Analog Inputs, 12 Transistor outputs, pnp, including 2 PWM
US10-B5-RA28 US10-B10-RA28	14 Digital, including 2 HSC, 2 Analog Inputs, 2 Temperature inputs, 8 Relay outputs, 2 Analog outputs
US10-B5-TA30 US10-B10-TA30	14 Digital inputs, including 2 HSC, 2 Analog inputs, 2 Temperature inputs, 10 Transistor outputs, pnp, including 2 PWM, 2 Analog outputs
US10-B5-R38 US10-B10-R38	24 Digital inputs, including 4 HSC, 12 relay outputs
US10-B5-T42 US10-B10-T42	24 Digital inputs, including 4 HSC, 2 Analog inputs, 16 Transistor outputs, pnp, including 2 PWM

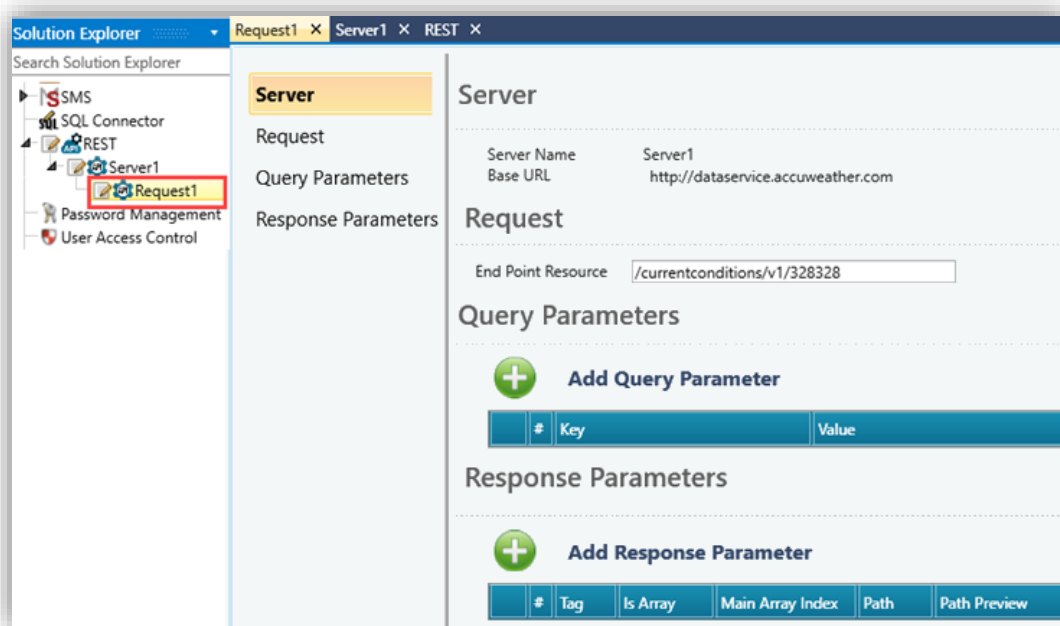
## NEW USL Displays

Big-screen UniStream USL Displays 10.4" and 15.6" are included in this release.

UniStream Displays are a series of color touch-screens that support VNC.

## REST API

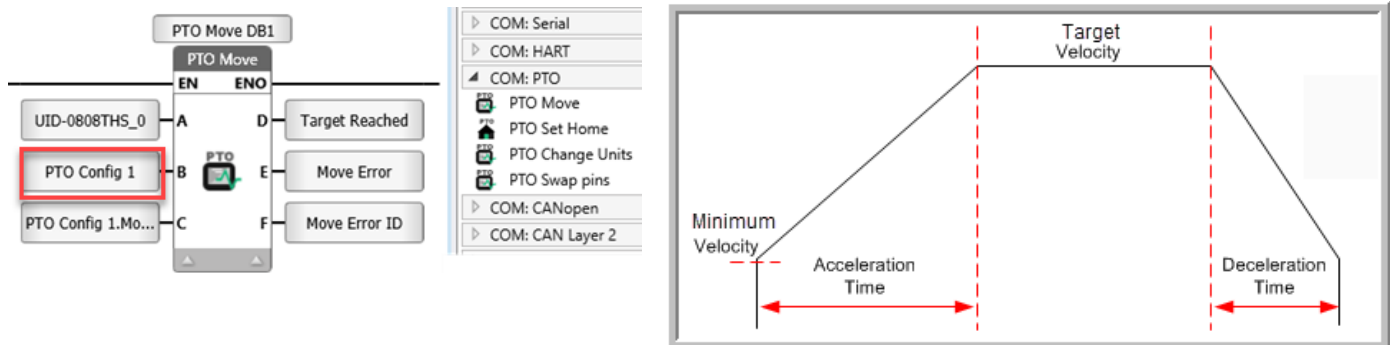
A UniStream controller can operate as a REST API client and can request specific data from a server. In order to communicate with an API REST server, you build a request, comprising Query and Response Parameters.



## PTO

You can now implement Pulse Train Output (PTO) via the high-speed outputs of I/O Module UID-0808THS.

Using PTO you can, for example, build Motion/Speed profiles that are appropriate for stepper motors.



## New Time-savers:

### Development Mode & Quick Sync

Development Mode and Quick Sync are time-saving features that can help you to develop UniLogic projects more efficiently. You can use them independently, or both together.

- **Development Mode:** when enabled, this mode saves time by temporarily suspending, for 1 hour, the password verification process performed between UniLogic and UniStream at download.
- **Quick Sync:** downloads small changes in Ladder, Message Composer, Switch Case, and Formula, while other changes are ignored. This can save significant download time during project development.

## UAC: New Features

The new UAC features listed below are useful for all, but are especially needed for UAC projects supporting the standard CFR-21 part 11:

### UAC User Groups, new Password features:

- **Expired On:** Password ageing, the number of days a password will be in effect for a member of a group before it expires.
- **Lockout Timeout:** Determines the number of minutes the user will be locked out before being allowed to attempt to log in.
- **Login Attempts:** The number of Login attempts a member of a group may attempt to login before being locked out.
- **Alarm Status Viewer widget:** If you enable UAC, you can select if buttons--ACK, CLR, Disable and Shelve Alarm--will be visible to a specific User Group.

## Additional features

- HMI Trends:
  - When a Trend graph is displayed, you can now press a new button in the top left corner to hide the buttons and increase the viewing space, and press again to display them.
  - Trend properties now include an option to change the background color of the Curve text (the default is black)
- Via UniApps, you can now enable UniStream to register when a connected VNC client screen is touched. In UniApps, access the Network tab-> VNC Server, check the Set 'touch bit' and press apply. The VNC server will restart with the VNC "touch" identification option enabled.
- USB Action Files: you can now include a PLC Password, selecting either to retain the default password, or overwrite the current password with a value that you provide.
- Modems: when you add a modem, you can now add a Signal Quality Refresh Rate.
- Message Composer: now supports REAL tags.

## Bugs fixed in this version

These have been fixed in the current version:

- MQTT Minor bug fixes
- Modem / SMS / Email: emails were received from certain servers without a 'From' header.
- USL: sometimes was disabled in UniApps.
- UAC: Users could log in, although another user was already logged in; a notification will now pop-up requesting logout.
- Ethernet/IP In certain circumstances, EDS import would fail.
- HMI keyboard: in Portrait view, the alphanumeric keyboard was missing the Z character.
- UniApps: Project Export to USB stick did not request a password.

## UNILOGIC® V 1.29 REV103 UNISTREAM® OS 1.29.128 May 2020

Unitronics Spring 2020 release introduces brand new hardware and powerful new software features to broaden your project potential!

### New Hardware

- New Ethernet-based URB components:
  - I/O modules: Loadcell/Strain-gauge, PWM, and Pulse I/O modules
  - I/O adapter:URB-TCP2, a compact, competitively-priced adapter that supports up to 6 URB I/O modules.
- Introducing Unitronics 4G Routers! Our new 4G/LTE & WiFi cellular Routers support embedded SMS functionality, RS232, RS485, GNSS (GPS), microSD, USB interface, and on-board Digital & Analog I/Os.

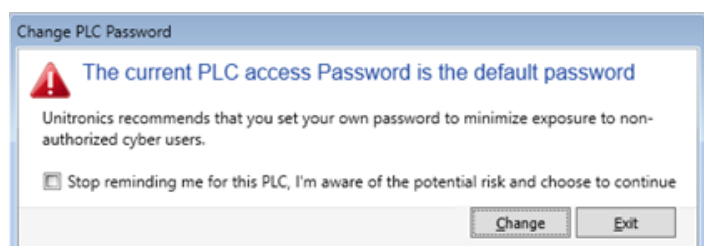
### New Software

- BACnet IP Server: Yes, UniStream controllers as BACnet IP Servers! The broad range of Services, Objects, and Tasks enables you to blaze new ground in Building Automation and Environmental Control. Compatible with all UniStream controllers. We invite you to activate the trial license to check it out!
- High-priority Ladder Task + Immediate Ladder Functions: \*Supported by the following models: US5/7-B5/10-T42 and USC-B5/10-T42. .
- Motion Control: - Update Firmware Wizard: | New Motion Control Functions: Apply Torque / Apply Force | New Actuators: Rack & Pinion, Roll-feeder / Conveyor |- Upload Axis Parameters to PC
- EtherNet/IP: New EDS Features: Scanner: Import a manufacturer's EDS configuration| Adapter: create and export an EDS file for adapter nodes you define in UniLogic.
- Authentication New!: Embedded user authentication now requires a PLC password before executing commands and tasks; simply install this UniLogic version, upgrade UniStream firmware--and gain increased security.

Regarding Authentication: Unitronics tracks the dynamic challenges that cybersecurity present to industrial automation. This version requires users to enter a PLC password before executing commands and tasks. UniLogic includes a default password. **Please change the default password** to minimize exposure to un-authorized cyber users.

We highly recommend you take this opportunity to benefit from the increased security offered in this version release.

To do so, you must update your UniLogic software, upgrade UniStream firmware, and download an application created/updated in this current version.



Read on to learn of other exciting features in this release, including new servo Motion Control functions, new Actuators, and more!

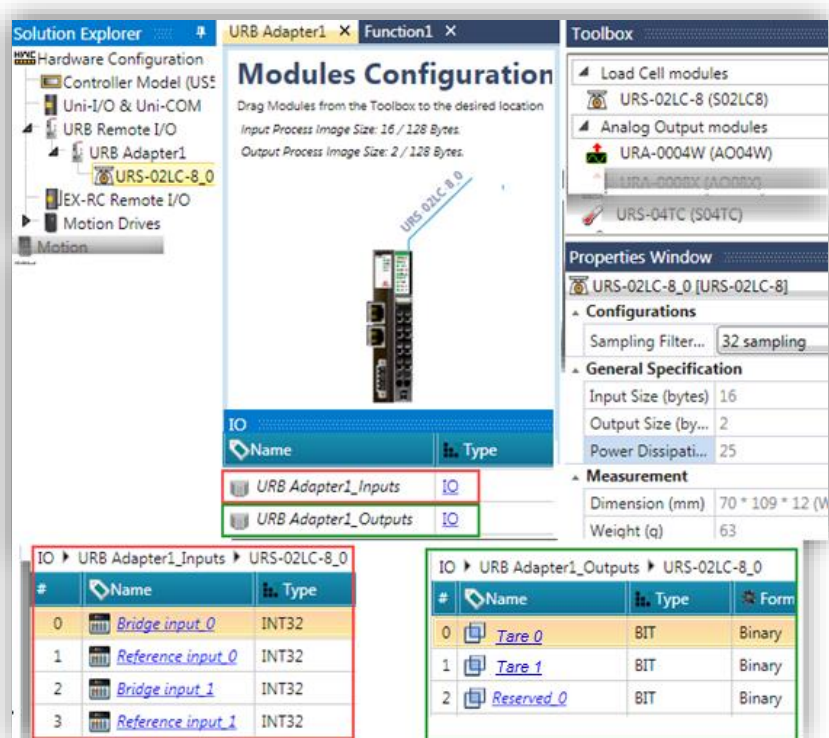
## Spring 2020 Feature List

### NEW in Remote URB I/O

Hardware Configuration now offers new additions to our line of URB Ethernet-based Remote I/O:

- Compact I/O Adapter URB-TCP2, which can support up to 6 URB I/O modules
- New I/O modules, including Loadcell/Strain-gauge and PWM modules

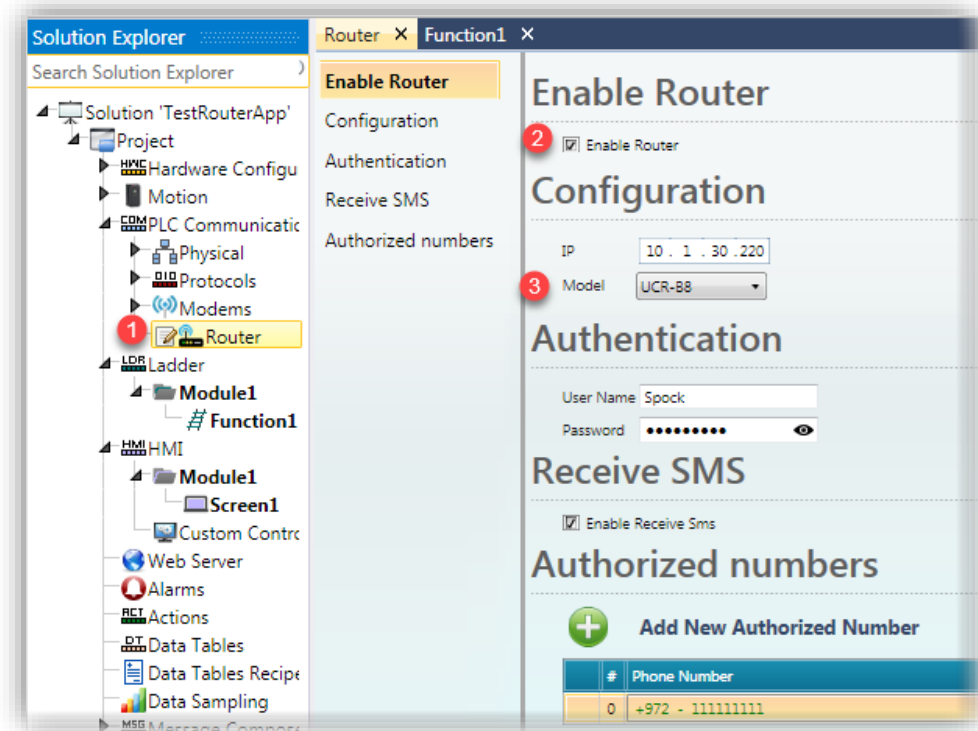
Model	Feature
URS-02LC-8	Load Cell
URD-04PW	PWM, 4 Channels
URD-02PW	PWM, 2 Channels
URD-02PU	Pulse2 Channels
URA-0800T	8 Analog Inputs, Current
URA-0800U	8 Analog Inputs, Voltage
URA-0008Y	8 Analog Outputs, Current
URA-0008Z	8 Analog Outputs, Voltage





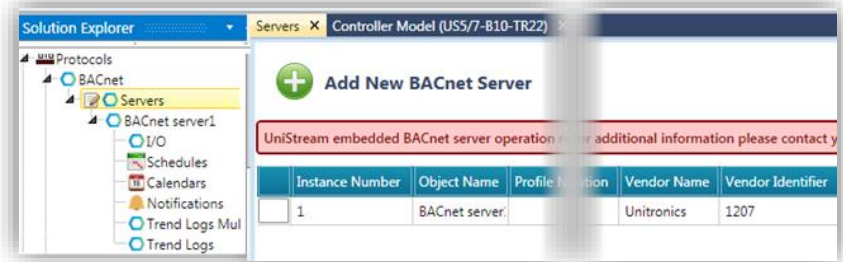
**Routers** Unitronics new [4G cellular routers](#) enable you to send and receive SMS messages via Ethernet. Hardware Configuration now offers these models:

- **UCR-ST-B5**  
4G /LTE & WiFi cellular router with 2 Ethernet ports and I/O
- **UCR-ST-B8**  
Dual-SIM 4G/LTE & WiFi cellular router with 4 Ethernet ports, Digital & Analogue I/Os, RS232, RS485, GNSS (GPS), microSD, and USB interface



## BACnet Server

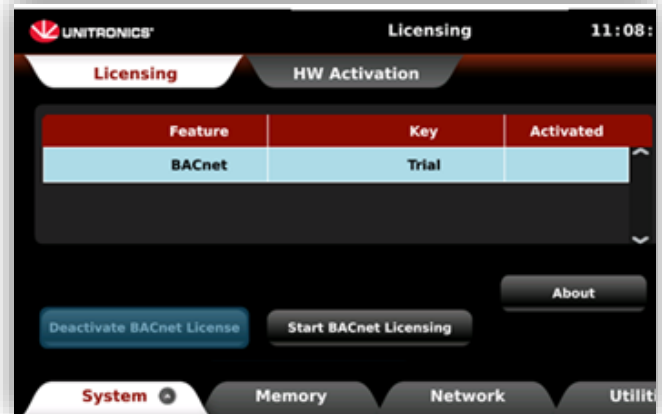
A UniStream controller can now act as a [BACnet Server](#), supporting a range of Services, Objects, and Tasks.



Note that BACnet Server requires a license purchase, available from your Unitronics' sales representative.

Unitronics offers you a One-hour Trial Offer, in order to enable you to explore this new exciting feature. Note that each time you power up your controller, you can restart the One-hour Trial Offer.

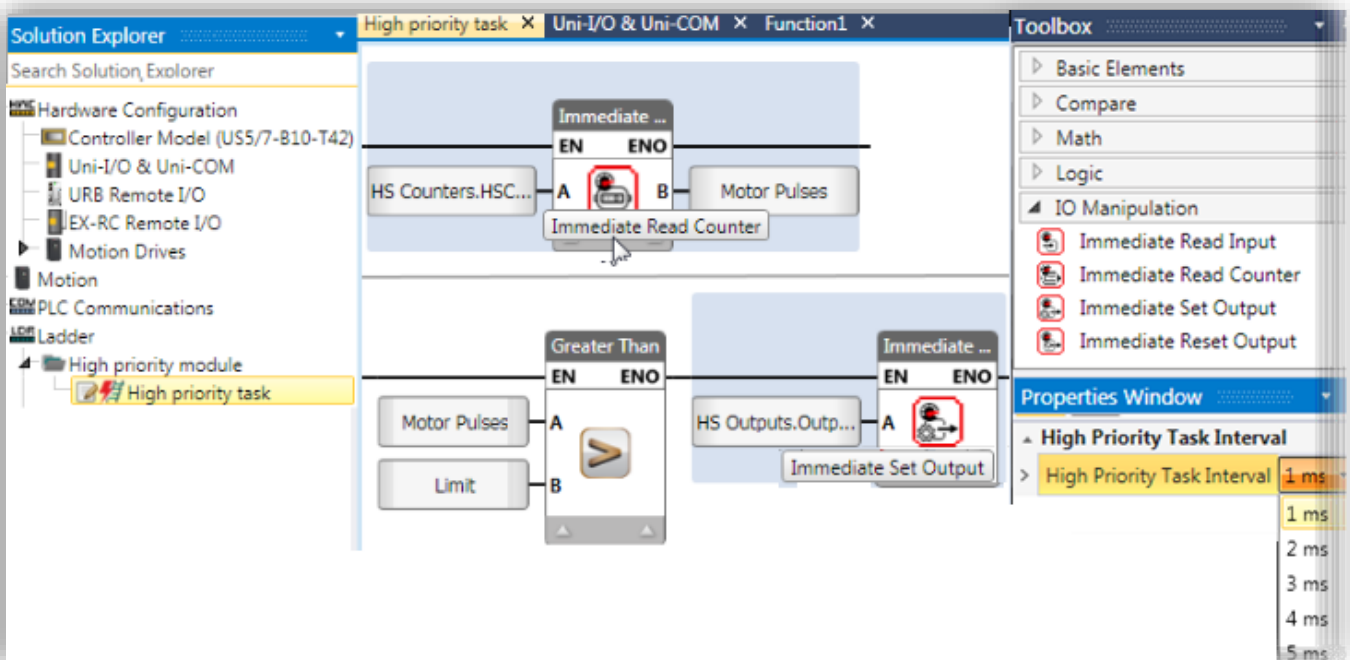
To learn how to activate the Trial Offer, refer to the BACnet Server topic in the UniLogic Help.



## Ladder: High-priority Ladder tasks (Interrupts)

A High-priority Ladder task runs independently of your Ladder program according to a specific time interval. Use them with Ladder functions Immediate Read Input/Input, Immediate Set/Reset Output.

These features are only visible in UniLogic when you select supporting models in Hardware Configuration, such as the US5/7-B5x-T42 and USC-B5/10-T42; when unsupported models are selected, these features are hidden.



## Authentication: UniLogic to UniStream

Starting with this UniLogic version and the accompanying UniStream firmware, Unitronics embedded user authentication measures into both UniLogic software and UniStream firmware. This enables you to prevent unauthorized access to your UniStream controller.

For this reason, UniLogic requires users to enter a PLC password before executing commands and tasks that require UniLogic to UniStream communication.

The first time a user establishes UniLogic to UniStream communications to a particular PLC, for example at application download, or to run online Test mode, UniLogic prompts the user to change the default UniStream access password.

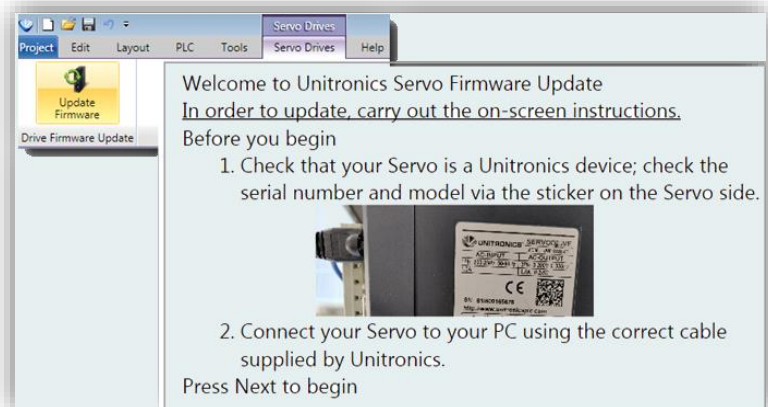
For details, including how to restore the default password, refer to the Help topic Authentication: UniLogic to UniStream



**Motion Control** This version offers several new Motion Control features, plus a new Servo Firmware Update wizard.

## Update Firmware Wizard

You can easily update your Unitronics' UMD Servo firmware via the Wizard, now available on the Servo Drives ribbon tab.



## New Motion Control Functions

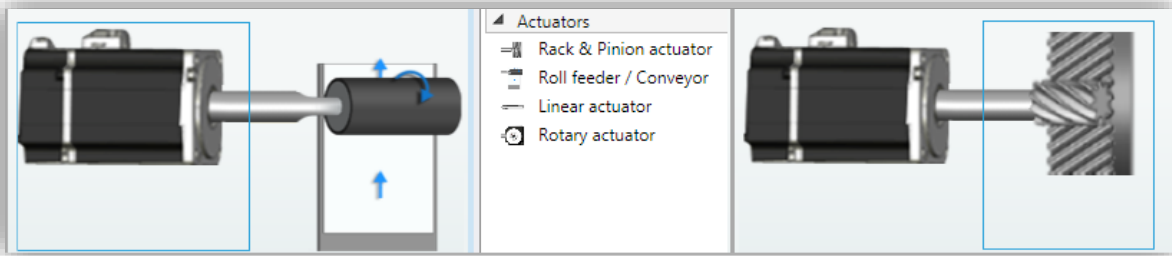
The Ladder Toolbox offers two new MC functions:

- **MC Apply Torque**  
Enables you to set Torque and apply it according to the physical values you define in the Axis Configuration, regardless of the motor specification.
- **MC Apply Force**  
Enables you to set Force and apply it according to the physical values you define in the Axis Configuration, regardless of the motor specification (linear actuators only).

In addition, MC Move Relative and MC Move Additive now support Continuous Update; set a bit to evaluate input parameters at each cycle.

## New Actuators

Two [new actuators](#) are available: Rack & Pinion, and Roll-feeder / Conveyor, allowing you to convert rotary movement to linear values.



## Upload Axis Parameters to PC

When you configure an axis, the values you enter in the Axis Struct are written to the axis at power-up. When you enter values from the HMI, the axis functions according to these values, but the values you have entered will be overwritten at power-up.

To overwrite the values in the axis struct, use Upload Parameters in PC.

Name	Configured value	Read value
Units	0.1 mm	0.1 mm
Position factor numerator	4194304	4194304
Position factor denominator	375	375
Maximum acceleration	600000	600000
Maximum velocity	20000	10
Maximum deceleration	600000	600000
Software position limit maximum	0	0
Software position limit minimum	0	0
Maximum position error time	2000	2000
Homing acceleration	0	0
Homing stopper torque	20	20
Homing blocking time	100	100
Emergency stop option	2	2
Disable option	0	0
Halt option	1	1
Zero velocity tolerance	0	0
Zero velocity tolerance time	0	0
Maximum torque	3000	3000
Emergency stop deceleration	4294967295	4294967295
Motion profile	0	2

## Additional Motion features

Axis Interface: Automatic conversion and rounding in Actuator properties. When you change the Unit setting, UniLogic now converts the value; for example, if Unit was set to  $\mu\text{m}$  and the value was 1000, setting the units to mm converts the value to 10.

Custom Units: You can now select Custom Units when working with linear actuators.

## EtherNet/IP: NEW EDS Features

You can now:

- Import a manufacturer's EDS configuration, when you set UniStream to act as a scanner.
- Create and export an EDS file for adapter nodes you define in UniLogic.

The screenshot shows the UniLogic software interface with the 'Scanner' tab selected. In the left-hand tree view, 'EtherNet/IP' is highlighted with a red circle '1'. A context menu is open, showing 'Add New Operation' with a red circle '2' and 'Add New Scanner Node From EDS' highlighted with a red box and a red arrow pointing to the 'Node Name' column of the table below.

Node Name	Node IP	T2O RPI [ms]	T2O Assemb	Input
EDS_DATALOGIC CBX-IOL-8-EIP	0 . 0 . 0 . 0	8	101	EDS_DATAL
My Node1	0 . 0 . 0 . 0	16	0	Godzilla

Below the table, the 'Global' section shows the selected node 'EDS\_DATALOGIC CBX-IOL-8-EIP' with its type 'EIP Scanner Node Struct'. A detailed view of the node's properties is shown below:

Name	Type	Power-up/Tr
Connected Bit	BIT	
Enable Node Bit	BIT	1
Explicit Busy	BIT	
Device Name	STRING-ASCII	""
Config Size (Bytes)	UINT16	
Connection Status	UINT16	
Device Type	UINT16	
Input Size (Bytes)	UINT16	499
Output Size (Bytes)	UINT16	499
Product Code	UINT16	
RPI_Q2T	UINT16	8
RPI_I2O	UINT16	8
Vendor ID	UINT16	
Disconnections	UINT32	

## Additional Features

<b>MODBUS</b>	<ul style="list-style-type: none"><li>• New Operations: MODBUS command <b>0x17</b> Write/Read Multiple Registers - Periodic and Aperiodic. These operations perform a combination of one Read operation and one Write operation in a single MODBUS transaction.</li><li>• You can now export and import a UniStream MODBUS Master's slave definitions, via a proprietary Unitronics file.</li><li>• You can now assign a MODBUS slave a Unit ID of 0</li></ul>
<b>CANbus "Sniffer Filter"</b>	The addition of a CANbus "Sniffer Filter" can help you monitor--and debug--only the specific CANbus units you specify, according to ID. Note that this can be helpful in Servo applications.
<b>MQTT</b>	<ul style="list-style-type: none"><li>• You can now assign a machine identifier to an MQTT topic: {PLC.MAC},{PLC.SN},{PLC.NAME}; PLC Names are assigned in UniApps.</li><li>• The user name in MQTT Broker Connection has been increased to 128 characters.</li></ul>
<b>VNC Server</b>	Now supports 1024x768 resolution
<b>OPC UA</b>	You now have the option to import client certificate files.
<b>Alarms</b>	<ul style="list-style-type: none"><li>• You can now Export/Import Alarm groups</li><li>• At reboot, the Alarm Summary is now retained</li></ul>
<b>UAC</b>	New option - numeric keypad instead of alpha numeric
<b>DT widget</b>	You can now display the Descriptions of array members; formerly you could only display the index number
<b>RTC Time zone</b>	Now supports partial hours.
<b>Schedule HMI</b>	Times can now be entered in 12h format (AM and PM)
<b>Emails</b>	The email TLS version was upgraded to TLS1.2
<b>FTP</b>	Limit the access to FTP to specific folder

## Bugs fixed in this version

These have been fixed in the current version:

- Data Sampler History file: in certain situations, Force Sample did not function correctly.
- UniCAN Communication: When CAN cable was disconnected and reconnected, or CAN power cycled, Tx between UniStream and V1040 would fail
- Initial values of retained tags: Sometimes did not update in PLC after regular Download
- Web Trend: Curve Names in Legend, were not visible when the Plot was set to white Fill
- Alarm Summary\Banner: When the alarm name contained the characters " ' " the alarm did not display in Alarm Summary\Banner
- SQL Query: Using a constant with parameters that included non-English caused a 'CPU Error'.
- UID-0200E and UID-0200D: Configuration sometimes did not download to PLC.
- Web Server: State machine button would show a false positive compile error when linked to a numeric tag that was not INT16
- 'MQTT Send Aperiodic': when sending values that were stored on the same Ladder net, would send old values
- email: email with data sample attached as csv.zip, could not be sent
- Store DTI to File: If Append + only CSV options was selected, no file would be generated
- Modem Init Ladder function: In certain cases the function returned Success, when using a modem without a SIM
- USBF: Could not write retained tags to the file
- URS-04RT: Would use a UINT16 instead of an INT16, which does not provide for negative temperatures. To fix existing projects, the I/O module needs to be removed from Hardware Configuration and re-added.
- Alarm file: not all Alarms were saved after after reboot
- MQTT: Cannot connect to Broker with a tag bigger than 1kb
- Message Composer:
  - -CRC was not calculated correctly in specific numeric values
  - -sometimes failed to build a message if it included a UINT32 value



## **UNILOGIC® V 1.28 REV34 UNISTREAM® OS 1.28.58 December 2019**

This is a Service Pack version, UniLogic 1.28.34, OS 1.28.58. This service pack is for the previous UniLogic version 1.28.26 and OS 1.28.39 released in September.

This version includes the features and bug fixes listed below.

### **Features**

- The Receive buffer size has been increased to 4K RX, enabling larger messages to be received via the Rx COM port.
- UniApps now offers an Ignore Uni IO Popup button, located in UniApps under System-> System Logs.
- Store UDTF to File:
  - Using this function to append data requires a UDTF file. Therefore, if in parameter E, you select option 1, Append to File, you must select either options 1 or 2 to create a UDTF file in parameter F. If you select, selected either options 2 or 3 (create .csv only or create .csv.zip only), the status parameter will indicate -14: append UDTF file error
  - In addition, there is now a new status indication -8: signature file error

### **Bug fixes - fixed in this service pack**

- UniCAN connection between UniStream and EX-RC/RC1: in certain cases, the connection was not re-established after disconnection.
- Ethernet/IP scanner: in some cases, the Ethernet/IP scanner was not able to re-establish connection with the adapter.
- Trend Widget History Button, HMI & Web: the button was greyed out and disabled in the previous version.
- Email: csv.zip Data Sample attachments could not be sent.
- System -> RTC Date -> Day of the week: when the day of the week was set to Saturday, the tag value did not update to 7.
- Mail Configurator Widget: under certain circumstances, selecting To/Cc/Bcc caused an HMI Application Overload.
- HMI:
  - Numeric box: at times, UniLogic did not allow the user to link an array member to a numeric box.
  - Custom controls: UniLogic displayed these on a black background, appearing blurred, instead of being transparent.
- AutoStart: in certain cases, the system did not recover from a crash, if a defined CANbus node was not found.
- Multi-Touch keyboard: in certain cases, the Virtual keyboard of multi- touch models did not respond.



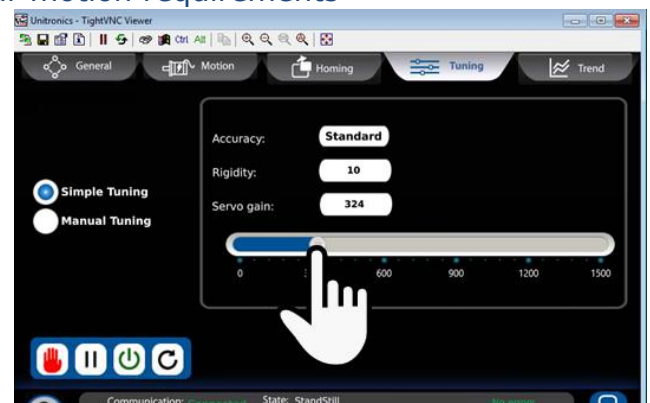
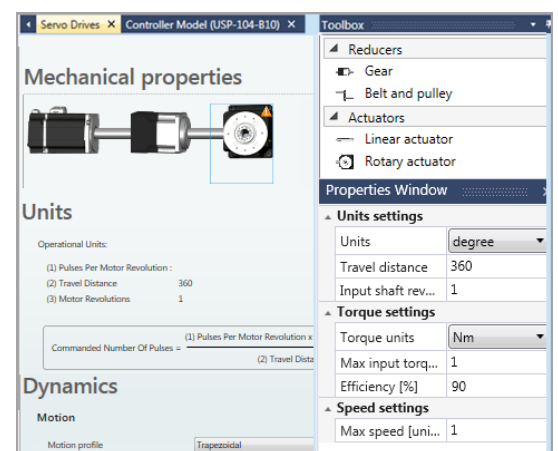
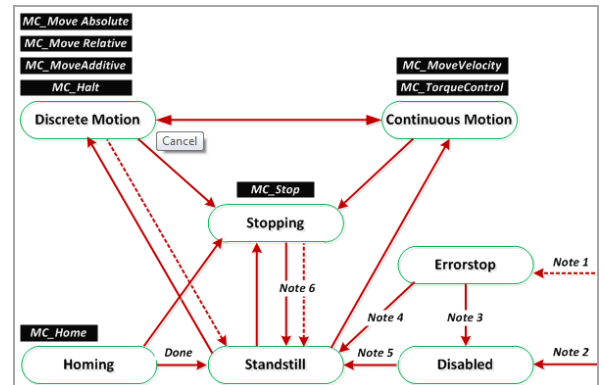


## UNILOGIC® V 1.28 REV26 UNISTREAM® OS 1.28.30 September 2019

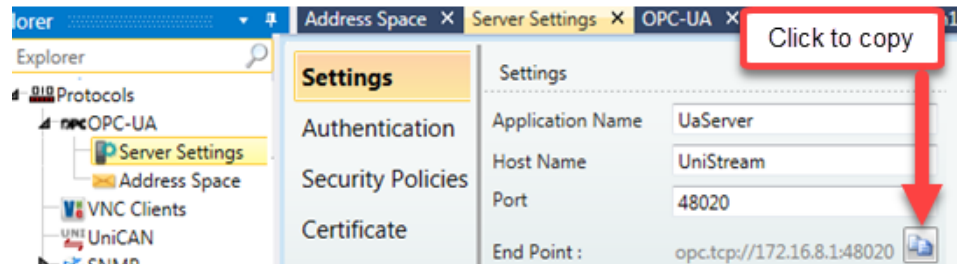
Unitronics fall release for 2019 launches a major addition to our All-in-One Solution: Motion Control. Our full range of Servos and Motors is easily programmed in UniLogic; the Ladder editor offers PLCopen-compliant MC Function Blocks. In addition, Unitronics supplies you with Ready-made Motion code; this enables you to immediately get moving with your Motion system.

UniLogic greatly simplifies servo applications by enabling you to:

- Drag & drop drives and motors into your project: UniLogic automatically defines the correct configuration and automatically sets up communications for you
- Add up to 8 Axes, drag & drop actuators; UniLogic automatically converts units
- Benefit from automatic calculations: UniLogic analyzes the mechanical properties of your selections and recommends safe values
- Use the Ready-made Motion application to execute movements, such as Point-to-Point, Jog, and Homing--you can open this application and edit as needed to adapt it to your motion requirements
- Program Motion Control via drag & drop, using industry standard motion Function Blocks (PLCopen)
- Tune your system using a single parameter
- Diagnostics: View servo run-time performance via UniLogic's built-in powerful, high-speed scope



Another major feature of this release is **OPC UA** - UniStream controllers can now act as OPC UA servers.



This

release also includes additional features.

## Feature List

### **Motion**

Hardware Configuration now offers Servo Drives and Motors.

In addition:

- The Ladder editor offers COM: Servo functions, and PLCopen-compliant MC Function Blocks
- Unitronics supplies you with Ready-made Motion code; this enables you to immediately get moving with your Motion system.

### **OPC UA**

UniStream controllers can now function as OPC UA servers.

### **Digital Signature**

The Data Table files generated by the function Data Table: Indexed> Store DTI to File are now automatically stamped with a digital signature.

### **Ladder: Draw**

New Ladder Functions enable you to draw shapes, and groups of shapes on the HMI screen (Not yet documented)

### **RTC /GMT**

UniStream now supports two clocks, Local Time and GMT. You can use these in Ladder elements, HMI Widgets, and set them via UniApps.

- A new parameter has been added to the RTC struct, Time Zone
- Existing Ladder functions Set PLC Time/Date now have a new parameter, Status.
- New System structs have been added, UTC Time and UTC Date

## **Additional features**

- IO bus system struct now includes a tag: IO Boot Reset
- Web Data Table element now includes Show Last Update
- Web Data Table width limit reduced to 300px
- Caption of the table in Data Tables widgets (HMI/Web)
- SQL now includes Test Connection
- CANopen: CANopen nodes can now be duplicated
- HMI:
  - Message Boxes can now be aligned
  - Message Box Buttons: location can be changed
  - HMI Slider: ticks color may be changed
  - HMI Trends: Background Color, Grid Color and Plot Color can now be changed

- Alarms offer new options:
  - Alarms Silent ACK
  - hide the Snooze button
  - display the alarm banner only if there's an alarm
- CRC ladder element: new CRC\_ASCII option
- User Access Control, User options, now has two new options::
  - Show User Name; un-check to hide a user's name in the Scroller at login
  - Allow Change Password, un-check to hide that option from the user
- Store DTI To file, new options:
  - 0 - No CSV File (Only udtf)
  - 1 - Create CSV File (ALL udtf/csv/csv.zip)
  - 2 - Only csv
  - 3 - Only csv.zip
- SD Management now includes Data Table files
- The following passwords now support up to 16 characters:
  - UniApps Administrator
  - UniApps Guest
  - Upload
  - Import/Export App
- Project Level Actions: Now includes Safely remove SD and Safely remove DOK (memory stick)
- String tags have been increased to 256 characters
- Online mode view: maximum tag size increased from 256 bytes to 514.

### **Bugs fixed in this version**

- In certain cases, the Web tables index column ("#") would sometimes present only zeros..
- Using \*/ in region or rung comments would cause compilation errors.
- If the project was created when the UniLogic UI language was set to Chinese or Czech, SD Management did not work.
- Web-Server - HyperLink did not work when linked to a Const string tag
- While linking an array to FB in Ladder, when selecting the array with the mouse cursor, the keyboard input did not function
- If the user selected URB modules before selecting a power supply, the modules did not function correctly.
















## **Hardware Configuration**

**UniStream PLC** Hardware Configuration now offers UniStream PLC +I/Os controllers.

The series is available in three versions: Pro, Standard, and Basic.

Note that a model number that includes:

- B10 refers to Pro version (e.g. USC-B10-T24)
- B5 refers to Standard version (e.g. USC-B5-RA28)
- B3 refers to Basic version (e.g. USC-B3-T20)

UniStream	PLC	Pro	Selected PLC
 Modular >	 Basic >	 USC-B10-B1	<b>USC-B10-R38</b>
 Built-in >	 Standard >	 USC-B10-TR22	CPU + built-in I/O configuration
 PLC >	 Pro >	 USC-B10-T24	Built-in ports: 2 Ethernet, 1 USB host, 1 mini USB programming port
		 USC-B10-TA30	Add-on ports: Compatible with UAC-CB modules
		 USC-B10-RA28	Built-in I/O Configuration: 24 Digital inputs, 24VDC, sink/source, including 4 High speed counter input channels
		 USC-B10-T42	2 Analog inputs, 0-10V / 0-20mA / 4-20mA, 12 bits
		 USC-B10-R38	12 Relay outputs
			I/O Expansion: - Uni-I/O Local Expansion - URB Remote I/O
			 

### **Features**

<b>Power Features</b>	<ul style="list-style-type: none"><li>• Built-in Trends and Gauges, auto-tuned PID, data tables, data sampling, and Recipes</li><li>• UniApps™: Access &amp; edit data, monitor, troubleshoot &amp; debug and more</li><li>• Security: Multi-level password protection</li><li>• Alarms: Built-in system, ANSI/ISA standards</li></ul>
<b>I/O Options</b>	<ul style="list-style-type: none"><li>• Built-in I/O configuration, varies according to model</li><li>• Local I/O expansion via Uni-I/O™ modules, and UAG-XKxxxx I/O expansion adapters</li><li>• UniStream Remote I/O Ethernet adapters and modules</li></ul>
<b>COM Options</b>	<ul style="list-style-type: none"><li>• Built-in ports: 2 Ethernet, 1 USB host, 1 USB device port</li><li>• Add-on ports (UAC-CB), available by separate order:<ul style="list-style-type: none"><li>◦ 1 CANbus port may be added to all models</li><li>◦ RS232/485 ports: according to model technical specifications</li></ul></li></ul>
<b>COM Protocols</b>	<ul style="list-style-type: none"><li>• Fieldbus: CANopen, CAN Layer2, MODBUS, EtherNetIP and more. Implement any serial RS232/485, TCP/IP, or CANbus third-party protocols via Message Composer</li><li>• Advanced: SNMP Agent/Trap, e-mail, SMS, modems, GPRS/GSM, VNC Client, FTP Server/Client</li><li>• Remote Access via any device that supports VNC</li></ul>

<b>Programming Software</b>	All-in-One software for hardware configuration, communications, and HMI /PLC applications, available as a free download from Unitronics.
<b>HMI</b>	<p>All UniStream PLCs can display HMI screens on the following devices:</p> <ul style="list-style-type: none"> <li>• UniStream Display (USL)</li> <li>• UniStream Modular HMI panel (USP)</li> <li>• UniStream Built-in (on the panels integral to the device)</li> <li>• Any device screen that supports VNC client</li> </ul> <p>HMI screens are designed in UniLogic. In addition to the HMI screens, UniStream PLCs offer built-in HMI features, including:</p> <ul style="list-style-type: none"> <li>• UniApps™: Access &amp; edit data, monitor, troubleshoot, debug, and more</li> <li>• Security: Multi-level password protection</li> <li>• Alarms: Built-in system, ANSI/ISA standards</li> </ul>

**Differences between B10, B5, and B3**

Feature	B10 Pro	B5 Standard	B3 Basic
I/O Expansion via Uni-I/O	Yes		No
Remote I/O Expansion via Ethernet I/O Adapter (URB)	Up to 8		1
VFD	32		2
MicroSD	Yes		No*
Add-on COM modules	3		2
System Memory	6GB	3GB	3GB
MODBUS Slaves	Unlimited		Up to 8
Ethernet/IP Scanners	16		1
Ethernet/IP Adapters	32		8
Web Server	Yes	No	No
SQL Client	Yes	No	No
MQTT	Yes		
PID Loops	64		2
Data Sampler/Trends	Yes		No
CSV files: creating/ reading	Yes		No
FTP, server/client	Yes		No
Saving Data Tables to SD	Yes		No*
Screenshots	Yes		No
Sending email attachments	Yes		No
USB device (programming port)	Yes		No**

\* Note that B3 models do not support features requiring SD cards. In addition, Alarm History is not retained after PLC reset.

\*\* Note that B3 models may be programmed only via Ethernet cable.

<b>UniStream PLC Models</b>	The built-in I/O configurations are indicated by the last group of digits in the model number. For example, USC-B5- <b>TR22</b> and USC-B10- <b>TR22</b> have identical I/O configurations.
<b>USC-B5-B1</b> <b>USC-B10-B1</b>	These models do not have built-in I/Os.
<b>USC-B5-TR22</b> <b>USC-B10-TR22</b>	<ul style="list-style-type: none"> <li>▪ 10 Digital inputs, 24VDC, sink/source</li> <li>▪ 2 Analog inputs, 0÷10V / 0÷20mA, 12 bits</li> <li>▪ 2 Transistor outputs, npn, including 2 High speed PWM output channels</li> <li>▪ 8 Relay outputs</li> </ul>
<b>USC-B5-T24</b> <b>USC-B10-T24</b>	<ul style="list-style-type: none"> <li>▪ 10 Digital inputs, 24VDC, sink/source</li> <li>▪ 2 Analog inputs, 0÷10V / 0÷20mA, 12 bits</li> <li>▪ 10 Transistor outputs, pnp, including 2 PWM output channels</li> </ul>
<b>USC-B5-RA28</b> <b>USC-B10-RA28</b>	<ul style="list-style-type: none"> <li>▪ 14 Digital inputs, 24VDC, sink/source, including 2 High speed counter input channels</li> <li>▪ 2 Analog inputs, 0÷10V / 0÷20mA, 14 bits</li> <li>▪ 2 Temperature inputs, RTD / Thermocouple</li> <li>▪ 8 Relay outputs</li> <li>▪ 2 Analog outputs, 0÷10V / -10÷10V / 0÷20mA / 4÷20mA, 12 bits</li> </ul>
<b>USC-B5-TA30</b> <b>USC-B10-TA30</b>	<ul style="list-style-type: none"> <li>▪ 14x Digital inputs, 24VDC, sink/source, including 2 High speed counter input channels</li> <li>▪ 2 x Analog inputs, 0÷10V / 0÷20mA, 14 bits</li> <li>▪ 2 x Temperature inputs, RTD / Thermocouple</li> <li>▪ 10 x Transistor outputs, pnp, including 2 PWM output channels</li> <li>▪ 2 x Analog outputs, 0÷10V / -10÷10V / 0÷20mA / 4÷20mA, 12 bits</li> </ul>
<b>USC-B5-R38</b> <b>USC-B10-R38</b>	<ul style="list-style-type: none"> <li>▪ 24x Digital inputs, 24VDC, sink/source, including 4 High speed counter input</li> <li>▪ 2 x Analog inputs, 0÷10V / 0÷20mA, 12 bits</li> <li>▪ 12 Relay outputs</li> </ul>
<b>USC-B5-T42</b> <b>USC-B10-T42</b>	<ul style="list-style-type: none"> <li>▪ 24x Digital inputs, 24VDC, sink/source, including 4 High speed counter input</li> <li>▪ 2 x Analog inputs, 0÷10V / 0÷20mA, 12 bits</li> <li>▪ 2x Analog outputs, 0÷10V / -10÷10V / 0÷20mA / 4÷20mA, 12 bits</li> <li>▪ 16x Transistor outputs, source (pnp), including 2 PWM output channels</li> </ul>
<b>USC-B3-R20</b>	<ul style="list-style-type: none"> <li>▪ 10 Digital Inputs,</li> <li>▪ 2 Analog Inputs</li> <li>▪ 8 Relay Outputs</li> </ul>
<b>USC-B3-T20</b>	<ul style="list-style-type: none"> <li>▪ 10 Digital inputs,</li> <li>▪ 2 Analog Inputs, 8 Transistor Outputs, pnp, including 2 PWM Outputs</li> </ul>

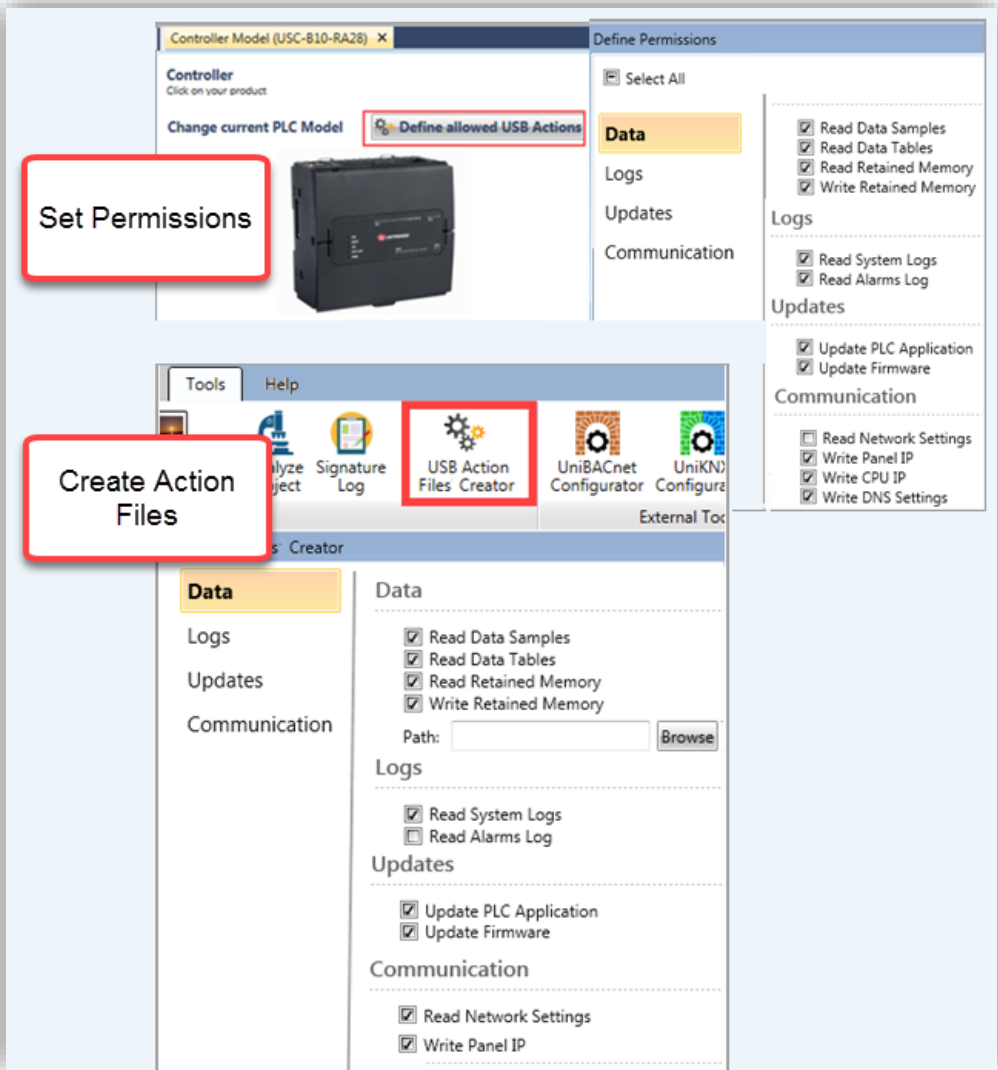
**USB Action Files:  
Interact with the PLC**

This is a special UniStream PLC feature; it enables the user to carry out certain task without the need to interact with the PLC via an HMI panel.

Programmers can create Action files in UniLogic and save them to a USB mass storage device, such as a flash drive. The end user can plug the drive into the PLC's USB port, and then press the Confirm button on the front of the PLC to run the file and execute the Actions.

Actions include updating firmware and network settings, downloading applications, extracting log files, and more.

In order for Actions to execute, the PLC must have permission. USB Action Permissions are set in Hardware Co, and are written to the PLC at download



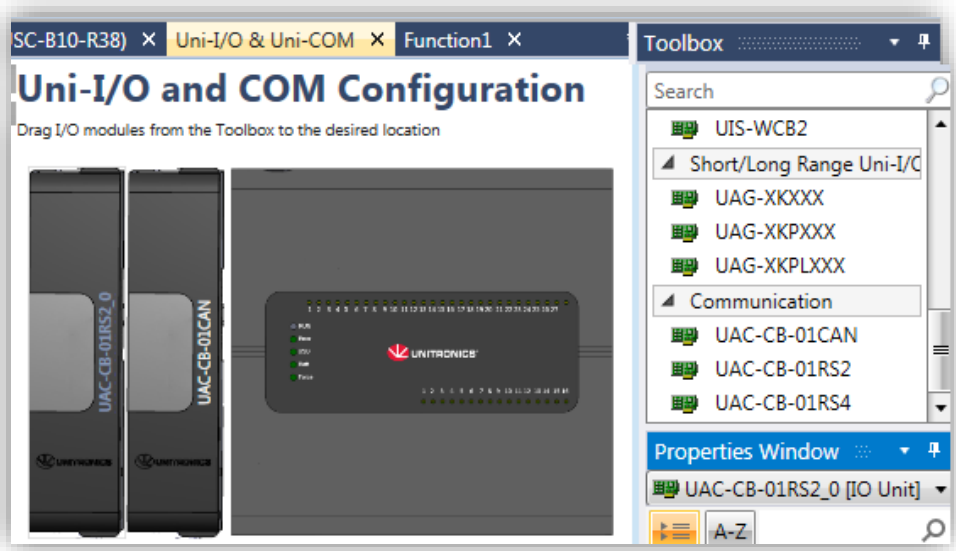


**UniStream  
Remote  
I/O: New  
Models**

Hardware Configuration now shows over 20 new UniStream Remote I/O modules.

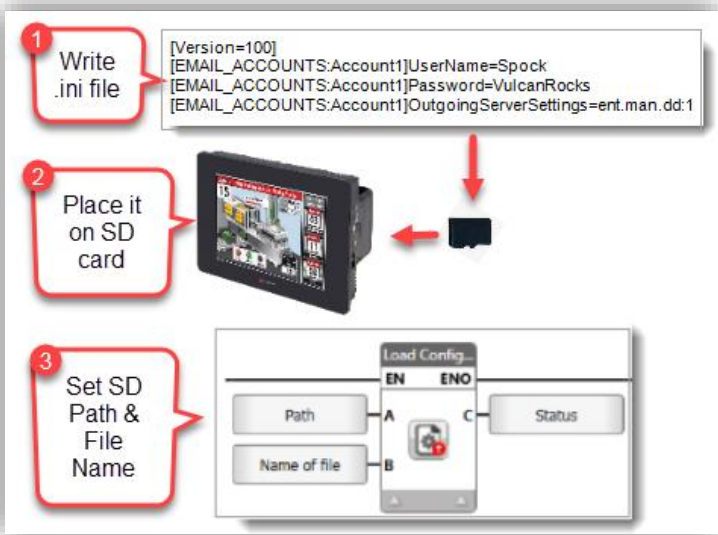
<b>Digital Inputs</b>	
URD-1600-8	16 Digital Inputs (Sink / Source), 24VDC
URD-3200-4	32 Digital Inputs (Sink / Source), 24VDC
URD-0400B	4 Digital Inputs, 120VAC
URD-0400C	4 Digital Inputs, 240VAC
<b>Encoder / High Speed Counters</b>	
URD-0200E	2 High Speed Counters / Encoder Inputs, 24VDC
URD-0200D	2 High Speed Counters / Encoder Inputs, 5VDC
<b>Digital Outputs</b>	
URD-0008CI	8 Digital Outputs, (Source), 24VDC/2A
URD-0016CG-8	16 Digital Outputs, (Source), 24VDC/0.3A
URD-0032CG-4	32 Digital Outputs, (Source), 24VDC/0.3A
URD-0008NI	8 Digital Outputs, (Sink), 24VDC/2A
URD-0016NG-8	16 Digital Outputs, (Sink), 24VDC/0.3A
URD-0032NG-4	32 Digital Outputs, (Sink), 24VDC/0.3A
<b>Relay</b>	
URD-0004SK	4 Solid State Relay, 240VAC/DC, 0.5A
URD-0004SM	4 Solid State Relay, 110VAC/DC, 1A
URD-0004SN	4 Solid State Relay, 24VAC/DC, 2A
<b>Analog Inputs 12 bit</b>	
URA-1600O-8	16 Analog Current Inputs 12bit
URA-1600P-8	16 Analog Voltage Inputs 12bit
<b>Analog Inputs 16 bit</b>	
URA-1600T-8	16 Analog Current Inputs 16bit
URA-1600U-8	16 Analog Voltage Inputs 16bit
<b>Analog Outputs 12 bit</b>	
URA-0004X	4 Analog Voltage Outputs 12bit
URA-0016X-8	16 Analog Voltage Outputs 12bit
<b>Analog Outputs 16 bit</b>	
URA-0016Z-8	16 Analog Voltage Outputs 16bit
<b>Temperature</b>	
URS-04RT	4 RTD / Resistance
URS-04TC	4 Thermocouple / mV
URS-08RT-2	8 RTD / Resistance
URS-08TC-2	8 Thermocouple / mV

<b>HART Support: New Uni-I/O</b>	The new UNI-I/O model <b>UIA-0800NH</b> , offers 8 analog channels with HART communication.
<b>UAG-CX- XKPLXXX</b>	UniStream CX Long-range I/O expansion adapter + embedded Power Supply for UniStream controllers offering jacks, such as the UniStream Built-in series. Available in lengths of 600, 1200, 1500, 2000, 3000 cm.



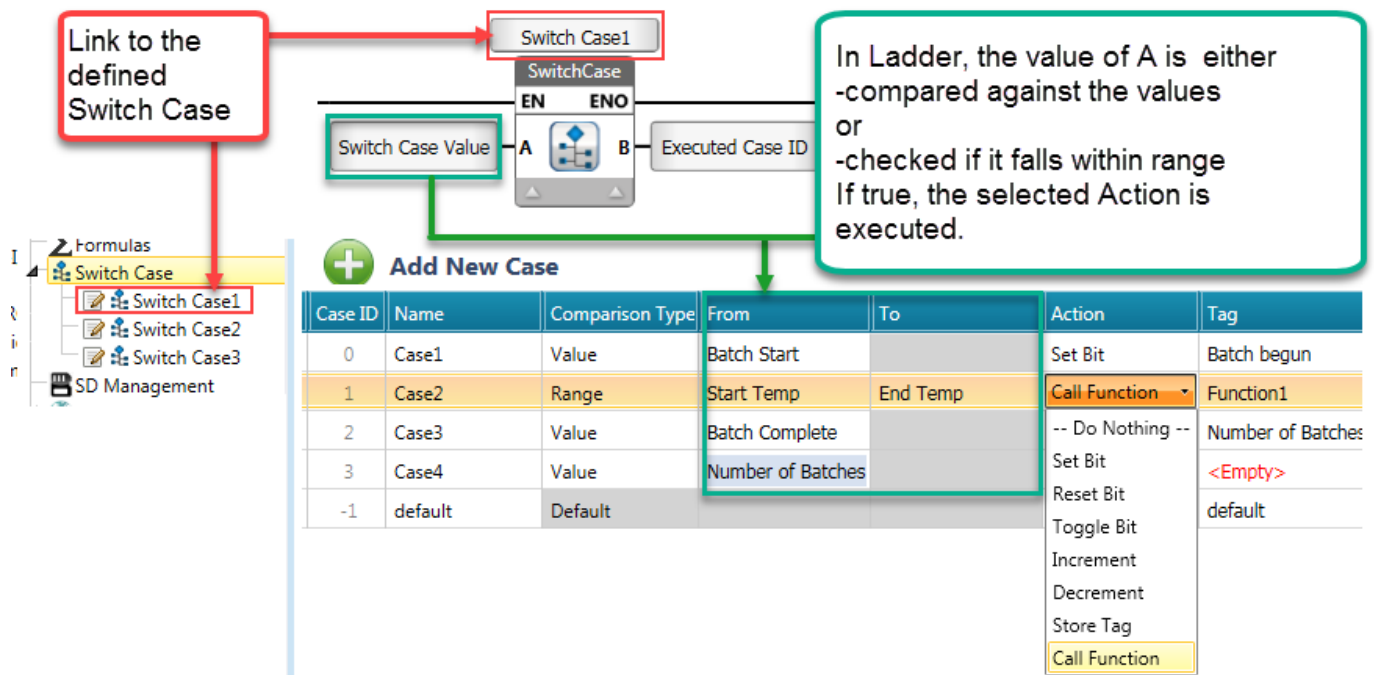
Additional Features

<b>Set PLC Configuration from file</b>	A new Ladder function enables you to load configuration files that modify the parameters shown below.
--	---



Function	Editable Parameters
Email Accounts	User Name, Password, Outgoing Server Settings, From
FTP Client	User Name, Password, Port, Remote IP
FTP Server	User Name, Password, Port, Read Only
FTP RAM Server	User Name, Password, Port
Panel: Network settings	IP Address, Subnet Mask, Default Gateway
COM Modbus	Baud Rate, Data Bit, Parity Bit, Stop Bit
COM txrx/com	

<b>Switch Case</b>	You can define groups of Switch Cases, and then run them via the Switch Case Ladder function.  This enables you to run multiple Compare operations in a single case, and use the results to drive one or more events.
--------------------	---



## SQL: Stored procedure

When you run a stored procedure, you can ignore @ placeholders by checking the "Is Executing a stored procedure" checkbox for each query.

Name	Is executing a Stored Procedure	Query String
Query1	<input type="checkbox"/>	SELECT * FROM Customers WHERE City = @City AND PostalCode = @PostalCode

**Edit 'Query1' SQL Query:**

```
1 SELECT * FROM Customers WHERE City = @City AND PostalCode = @PostalCode
```

**Help:**

Status: '2' of '@' named placeholders used in query

Input parameters:

Order in Ladder	String
0	@City
1	@PostalCode

Name	Is executing a Stored Procedure	Query String
Query1	<input checked="" type="checkbox"/>	SELECT * FROM Customers WHERE City = @City AND PostalCode = @PostalCode

**Edit 'Query1' SQL Query:**

```
1 SELECT * FROM Customers WHERE City = @City AND PostalCode = @PostalCode
```

**Help:**

Status: Warning: No Parameters have been defined.

Enter your query in the box to the left.

Supported:

- Query types: Select, Insert, Update, Delete, Etc.
- Parameter placeholders: ?, :name, and @name (@ cannot be used When executing a stored procedure)

Queries are executed via Ladder.

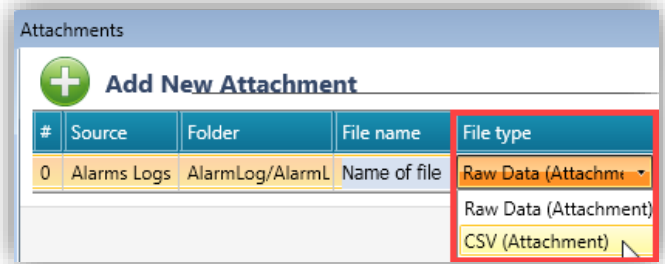
Click Help to learn how.

Help

---

**email Attachment,  
Alarm Logs**

You can now attach  
Alarm Logs as a .csv file.



---

**New Ladder  
Elements**

- Zip File from SD: Locate a file in an SD folder, zip it in .zip or gz format, and place it in a destination folder on the SD.
- FTP Compare File: locate a file on a remote FTP Server, compare it to a file on the controller's SD card, and overwrite the SD file if it is different.

---

**HMI Editor  
Additions**

- HMI PDF Viewer element: now offers Indirect file name support
- UniLogic HMI Toolbox: sort custom controls according to ABC
- Password box and Text Box HMI: now includes Numeric keypad support.

---

**Alarms**

Alarms now support several new features:

- Global actions:
  - - Create/close and Zip Alarm log
  - - Clear all Alarms
  - - Clear and Ack all Alarms
- Each individual Alarm now includes:
  - Alarm Cleared bit
  - Alarm Suppression bit
- New HMI Actions:
  - Clear all Alarms
  - Clear and Ack all Alarms
- New Alarm Ladder Elements:
  - Modify Alarm texts from CSV file
  - Reset cleared Alarm state

---

**Default Language:  
Korean**

You can now, when selecting a controller, under Properties/Regional Settings, select Korean, causing the controller to display the Korean keyboard when a user needs to enter data via the HMI screen.

---

**Modbus**

Modbus Groups have been increased to up to 128 groups

---

**Bugs fixed in this version**

- RTC Date/Time is now editable while in "Online" mode
- Web Server: State Machine buttons are now visible as expected
- Web Server: Web Page Roles can now be duplicated
- Online mode: Would sometimes disconnect randomly
- Table Recipe: If the name of the linked struct was changed, the table values would not be visible
- UniLogic gives compilation error if an SQL query includes an alias name
- Duplicating an array inside a struct would not keep members' names and comments
- Changing member of array name as Function In sometimes changed the current view

